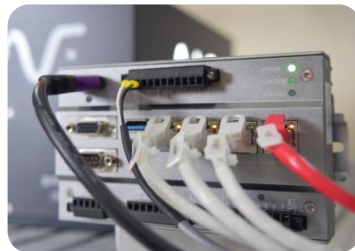
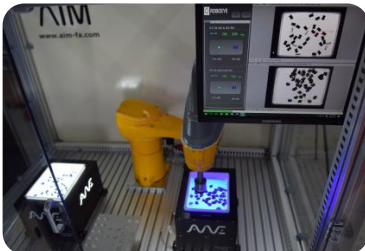
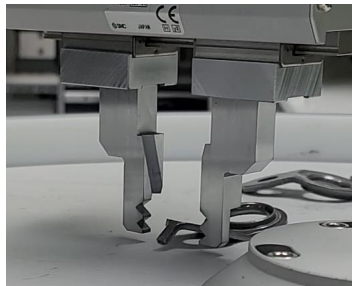




Intelligent Robotic vision system

# ROBOEYE

Easy and simple installation with robot



AIM company | [www.aim-fa.com](http://www.aim-fa.com)

## ROBOEYE

**Robo Eye** is an intelligent industrial vision system. The part detection and image processing system provides full control of flexible feeders and hoppers (mass storage devices) and provides an environment directly integrated with industrial robots.



Reasonable system cost

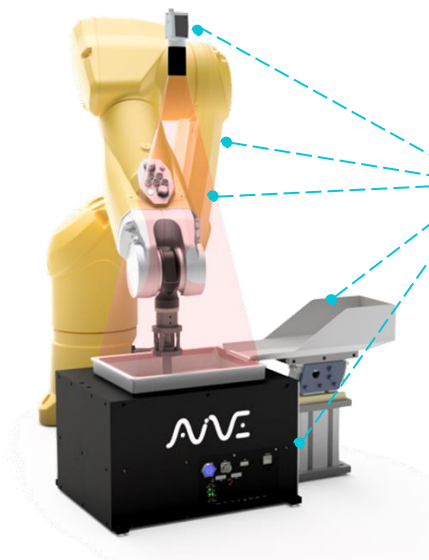
- System control by maximizing robot program
- Reduce material and labor costs by not using PLC or PC

**Easy and simple installation time reduction**

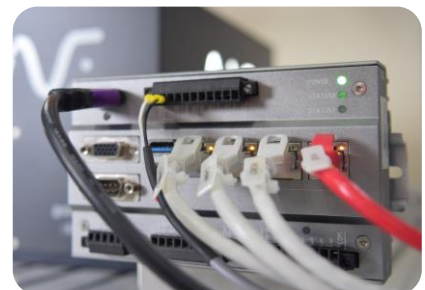
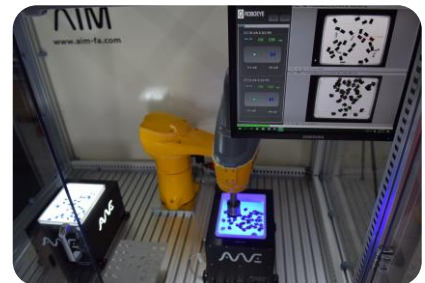
- All users can use it without any expertise.
- Fast installation, easy maintenance with integrated controller
- Minimize installation time by using pre-developed environment
- Communication with PLC supports TCP IP, RS232, 485, Digital IO, etc.

## Easy and simple installation with robot

The controller that integrates peripherals into one is quick and easy to install, reducing costs and making maintenance easier.



4Ch lighting control

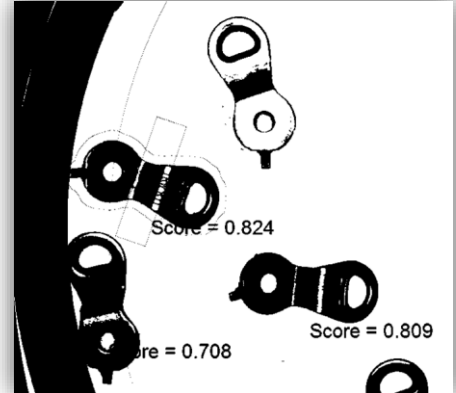


## Easy and simple UI



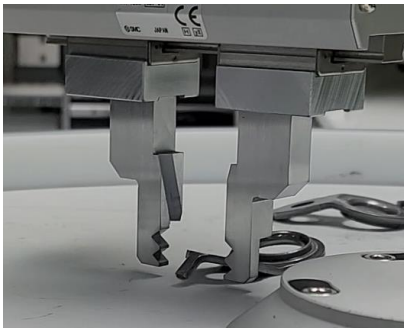
It is easy and simple to operate by configuring a simple UI for the operator and a minimum number of buttons for adjustment.

## Hopper, feeder control



The hopper is controlled with black and white ratio analysis to create an optimal operating environment.

## Detection of products with complex shapes



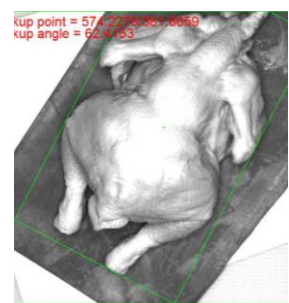
그리퍼 간섭검사



제품간 간섭검사

When using the gripper, additional checks are made to avoid interference. When picking up the product, the interference area is added and inspected so that there is no problem.

## Position detection of uneven products



## All-in one solution



Controller, software camera, lens package that can be easily and quickly integrated without an expert as a package solution for robot and component supply

## Various convenient option

### Mouse, Keyboard Monitor



### External control



### Storage device



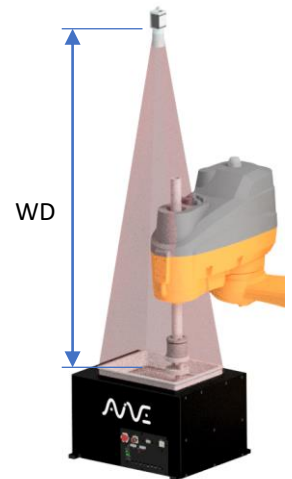
### Operation software



Complete functions are implemented through various communication support and a proven vision library. Quick response is possible with the remote control.

## Design with standard parts

Resolution	1.3Mp (1282px x 1026 px)		5Mp (2592px x 1944px)	
Model	AIVE 2.0	AIVE 3.0	AIVE 2.0	AIVE 3.0
WD	900	900	850	850
Lens	32	25	25	16
FOV	184 * 146	238 * 189	188 * 141	297 * 223
Px size	0.14mm	0.18mm	0.07mm	0.11mm

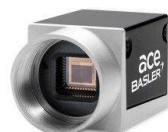


## Camera



### 1.3Mp \_Basler ace series

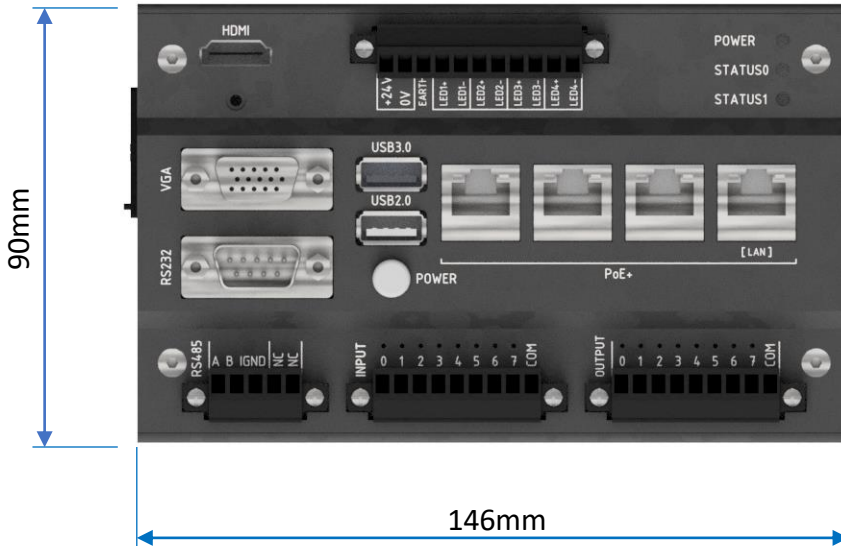
- 1282 px x 1026 px
- Mono
- GigE interface



### 5Mp \_Basler ace series

- 2592 px x 1944 px
- Mono
- GigE interface

## Controller



### Features

- **All in-one kit** : Controller, camera, lens
- **Optional parts** : Top light, Calibration plate, power cable, Calibration jig

#### •Controller

- Dimensions: 90 x 146 x 44 mm
- Weight: 800 g
- Operating Temperature: +5°C to 40°C
- Power: Voltage: +24VDC (+/- 5%)
- Current: Max 15A (4Camera and light 35w x 4ch)
- Win 10 64bit
- Intel® ATOM™ processor E3845, Quad Core 1.91GHz

- **Software**: ROBOeye
- **Ethernet**: 4x Gigabit Ethernet (PoE)
- **Light control** : 4Ch

#### POE?

-Technology to supply power and transmit data simultaneously with a single Ethernet cable. In most cases, POE eliminates the need for a power cable, simple installation and reducing installation costs.