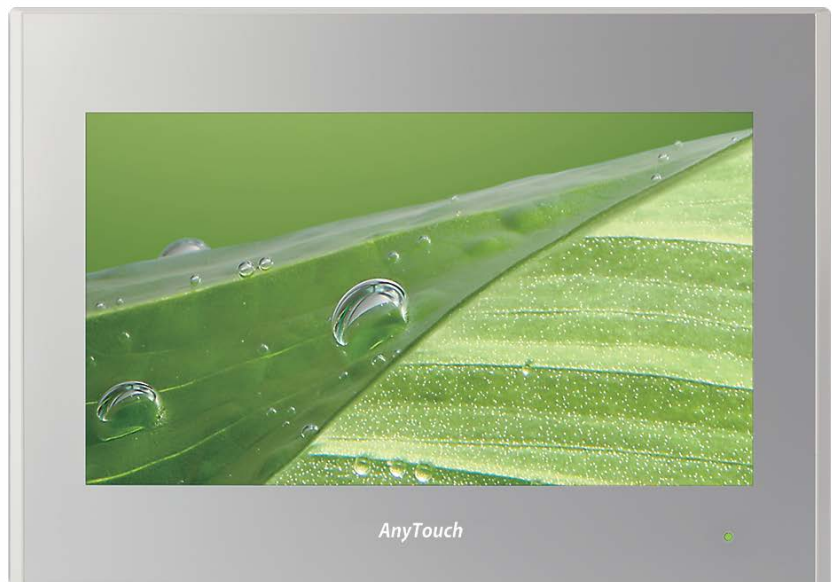




V9 Plus Series

The New Concept of Premium Touch Panel



V9 Plus Series

The Best Touch Panel for Precise Control and Easy Monitoring, AnyTouch V9 Plus Series.

High Performance

Connectivity

Usability

V9 Plus Series Lineup 04

Main Performances & Features 06

Drawing Software 16

Dimensions & Part Names 19

Optional Units 21

Specifications 22

System Configuration 24

Lineup Details 26

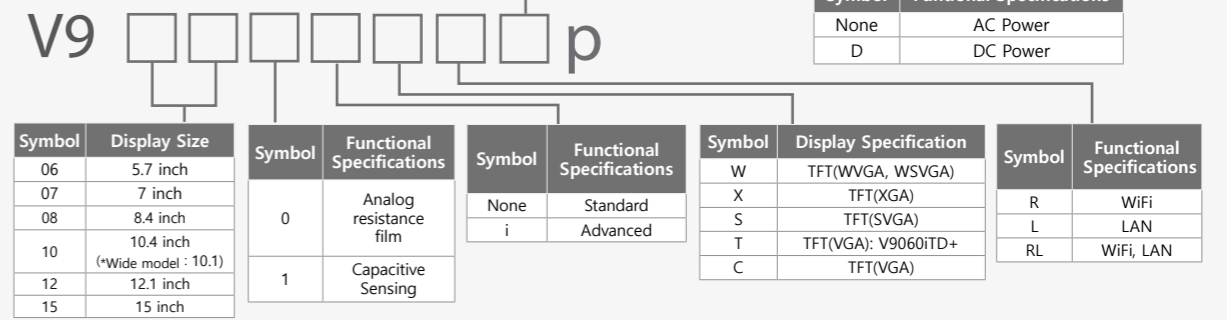
Optional Unit List 27









V9 Plus Series Lineup

We provide a wide range of product choice according to applicable application and Ethernet based mounting for the convenience of customers.

Product Selection



	15 inch	12.1 inch	10.4 inch	8.4 inch	7 inch	5.7 inch
V9p Advanced			V910*iWp Series  WSVGA(1024 x 600), 10.1 inch		V907*iWp Series  WVGA(800 x 480)	
NEW V9p Standard	V9150iXp Series  XGA(1024 x 768)	V9120iSp Series  SVGA(800 x 600)	V9100iSp Series  SVGA(800 x 600)	V9080iSp Series  SVGA(800 x 600)		
V9p Lite			V9100iCp Series  VGA(640 x 480)	V9080iCDp  VGA(640 x 480)		V9060iTDp  VGA(640 x 480)

Display·Touch Screen

V9 Plus Series take into capacitive sensing type so that possible to have Flexible operation.*1

The fine can be represented by the 16.7 million color representation.*2

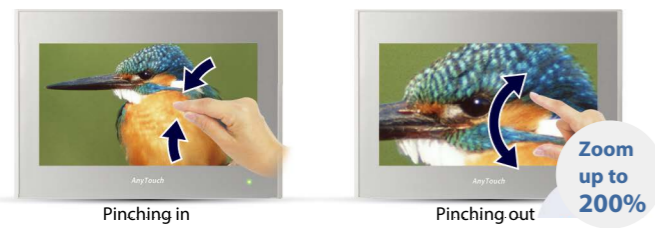
*1 Capacitive Sensing type corresponds to only V9p advanced model.

*2 Correspond to only pictures, 3D parts and video outputs, other items can be output with 65,536 colors.

Touch Screen

Zooming In and Out with Pinch (Two Fingers)

The displayed image can be magnified up to 200% by pinching out the screen*, and reduced to the original size by pinching it in. **V9p Advanced**



* The image can be scaled up and down by double tapping for V9p Standard/Lite.

Scrolling Magnified Images

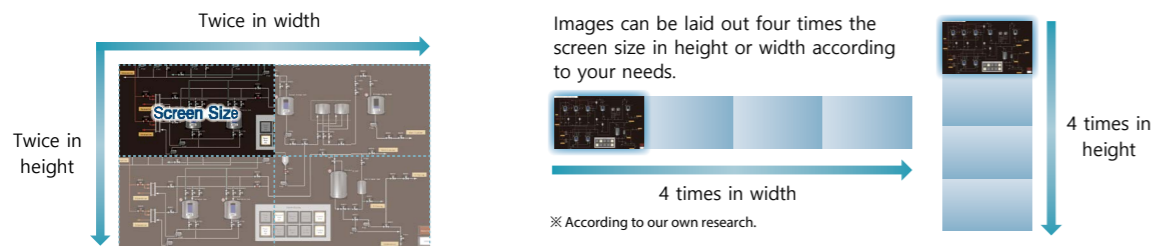
You can view a particular part of a magnified image in close-up while scrolling around the screen.



Abundant Quantity of Information

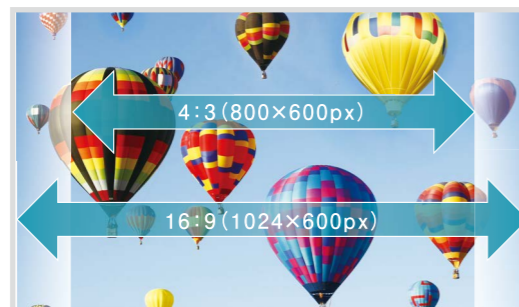
Displaying Four Times the Screen Size **First in industry**

The whole area of a large image can be confirmed easily by scrolling the screen without the need of switching it. The navigation window helps you to recognize the current displayed position instantly.



Widescreen LCD **V9p Advanced**

V9+ Advanced models is equipped with a high-precision, high-resolution widescreen (16:9). Greater volume and variety of information can be displayed on the screen.



Enhanced Display Capacity

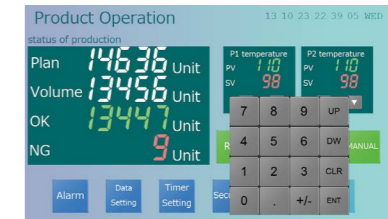
True Type Fonts for Clear Expression

TrueType fonts have been added, and the new anti-aliasing function ensures clear expression. There is no need to worry about memory capacity, because TrueType fonts need less memory compared with Windows fonts.



7-Segment Fonts for Realistic Expression

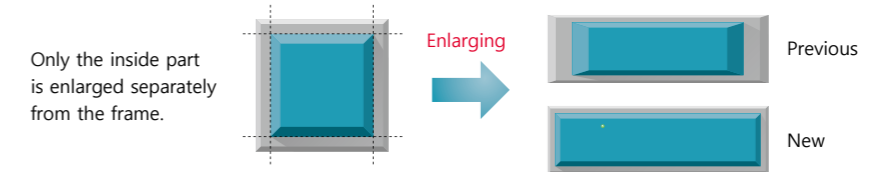
7-segment fonts allow for realistic, highly visible expression of measuring instruments.



Improved 3D Parts Enlargement Function

The form of 3D parts is remained even when they are enlarged.*

* Only square switches / lamps.



Versatile Screen Transition Functions

15 kinds* of functions are available for screen switching and overlapping.

* Four types for overlapping windows.



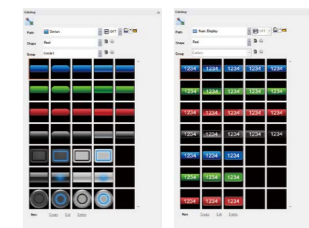
Compatible with Vertical Placement

The screen can also be displayed and edited while the panel is placed vertically (by left or right turning).



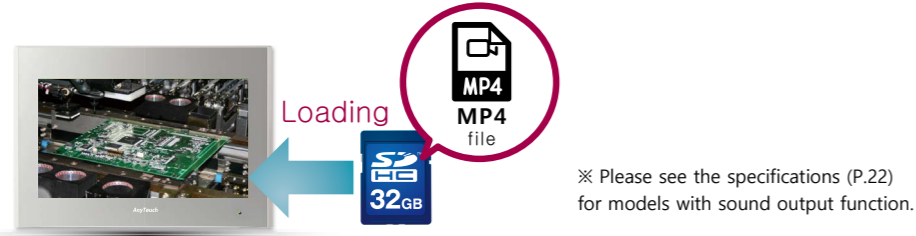
Beautiful and Practical Icons

The same part as smart phones has been added. The number of optional icons has been more beautiful and easy-to-understand. The icons are PNG files, so there is no worry about the display capacity.



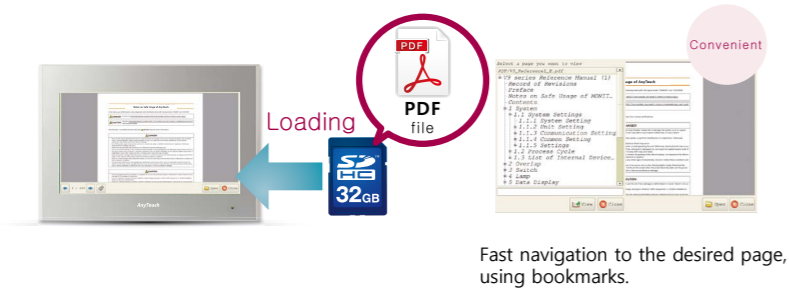
Video Player Function

A video player function is provided with all models of the V9p Series. The video player can be operated by a switch on the V9p or a command from the system menu or PLC. Animated images used for operation instruction and other operations will reduce the down time(Stop time) of machines and facilitate the standardization of operation.



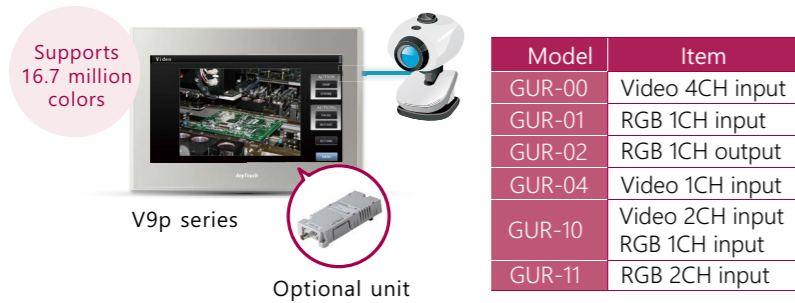
PDF Viewer Function

PDF files stored on SD cards can be displayed. PDF instruction manuals can be used for troubleshooting.



Video/RGB Input-Output Support

By attaching an optional unit, videos and RGB images can be displayed on the V9p. Also, images displayed on the V9p can be sent to external displays.



VNC Server and Wireless LAN

VNC Server Function enables the operation, share and surveillance of the V9p screen on the remote site through a simple software installation. Moreover, Wireless LAN Function can work without cable connection more conveniently.

VNC Server Function

Remote Connection from Tablet

All types of the V9p series are equipped with VNC server function for remote monitoring and control of production from your tablet.



Direct Communication with your Tablet

V9p Advanced

V9p Advanced model incorporates an access point, which enables direct communication with a wireless device without an external access terminal.

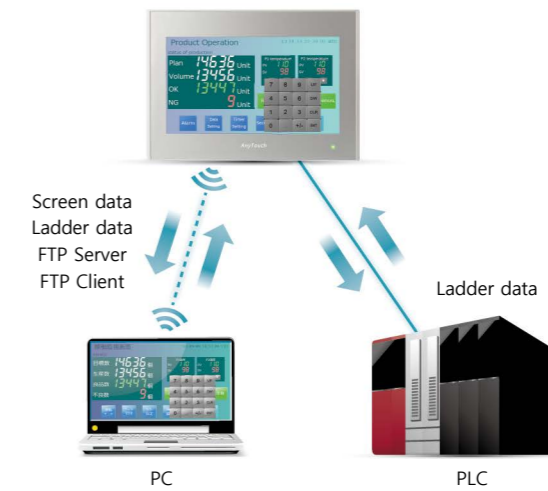


Wireless LAN Function

V9p Advanced

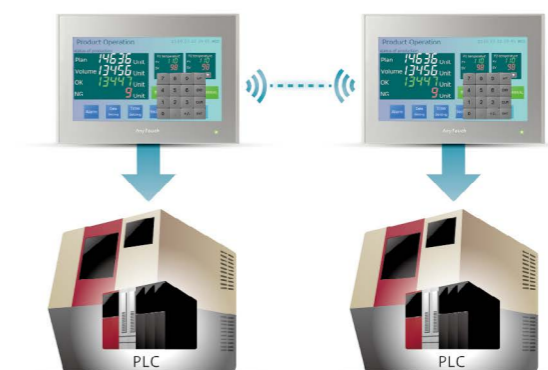
Wireless Data Transfer

By connecting a PC to a V9p via wireless LAN, screen data can be shared and ladder programs transferred to the PLC. It is easy to debug the program on site without connecting to the cable.



Gateway Function

Production data can be transferred between machines using V9p panels as a gateway.



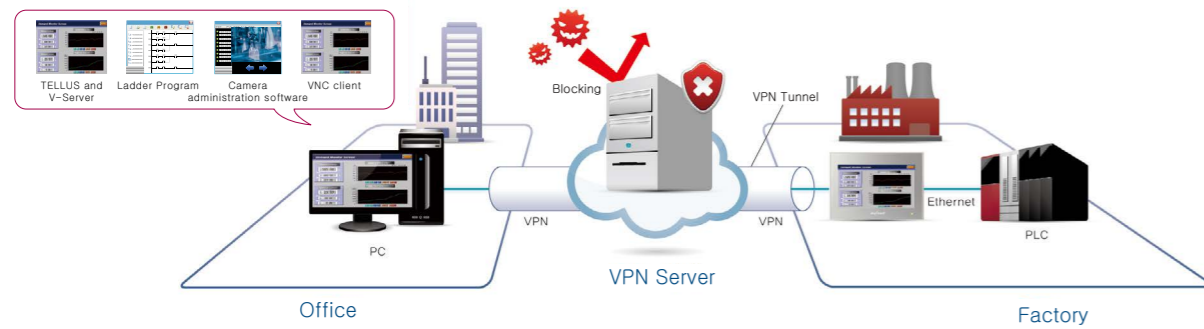
Networking

The standard built-in VPN function which create a secure virtual leased line by using public network. Can be constructed at the Secure, Easy and Low-cost remote monitoring system by VPN Function.

VPN Function

Secure, Easy and Low-cost Communication by VPN Function

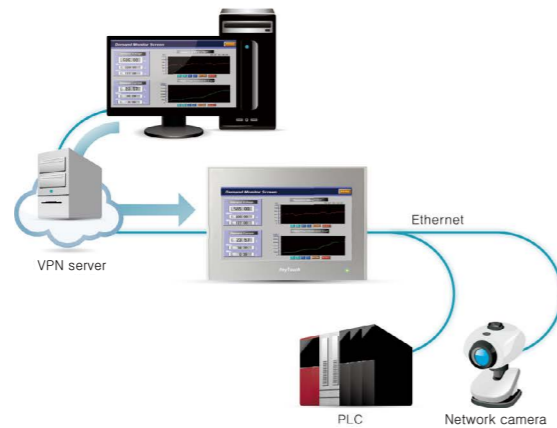
The VPN function, which constructs a virtual private network within a public network, enables secure remote monitoring at low cost.



Router Function for Remote Connection* V9p Advanced

The routing function enables remote connection to any devices connected with a V9p via Ethernet.

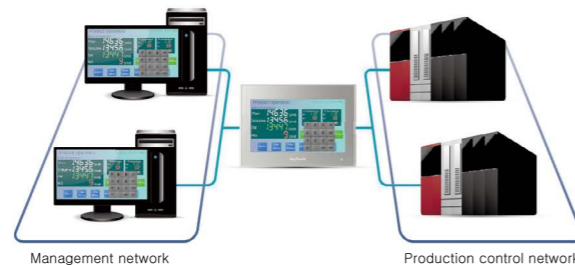
* Only LAN port of 2CH.



Dual LAN Ports Connecting to Two Networks*

Two networks can be connected via a V9p as a gateway.

* Other models except for advanced models need an optional communication unit. Please contact us for details.



Network Function

E-mail Transmission Function Support

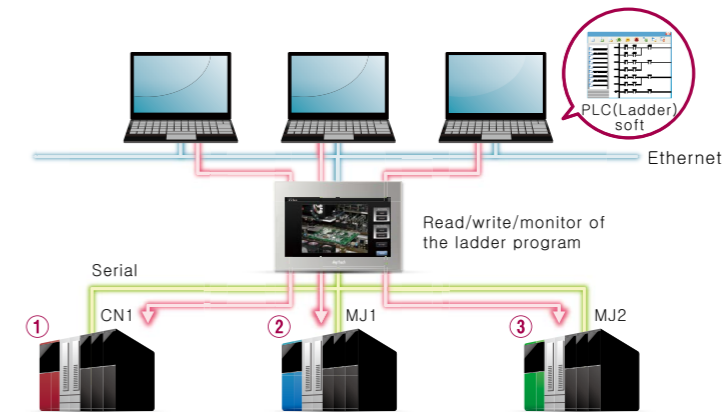
E-mails can be sent to preset addresses when alarms are issued or lifted. Addresses can be set for each type of alarm.



Secure Enhanced Security
SSL/TLS transmission is supported, so you can work with peace of mind.

Ladder Program Transmission (3-way) Support

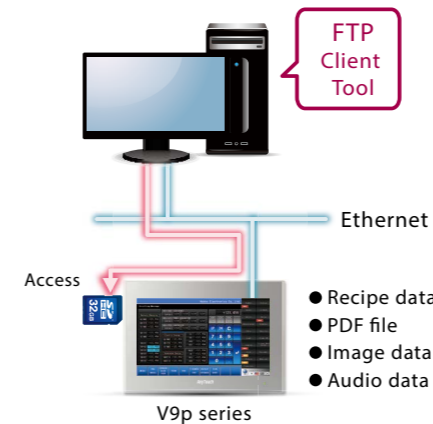
Up to 3 PLCs are accessible to monitor and revise PLC programs by connecting a PC to V9p via Ethernet.



FTP Server / Client Support

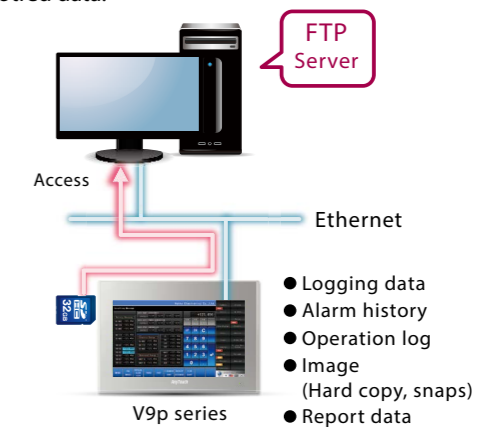
FTP Server Function

Files in a storage media inserted in a V9p can be read out and written using a PC.



FTP Client Function

Files on an FTP server can be read and written using a V9p. It is also possible to use a V9p as an FTP server and access its sorted data.



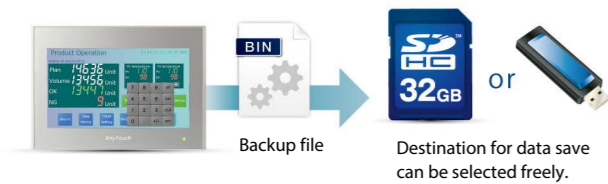
Logging · Alarm · Overlap

Trends and the alarm function for effective logging are expanded, so you can use them very conveniently. Moreover, the expression was significantly increased by extending the overlap function with eased restriction.

Data Backup and Trend Data

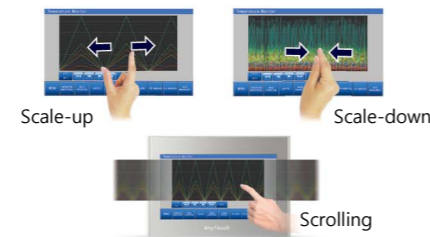
Backup Data Display and Create a Simple Backup File

Backup and alarm backup data can be displayed on V9p. Backup files can be created automatically via Scheduler



Magnification of Trend Graph Scale

The time scale or trend graph can be magnified, and the display can be scrolled by touch and drag.



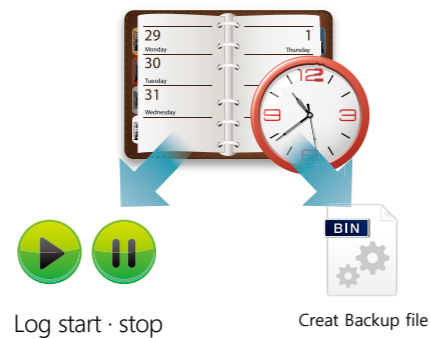
Backup Data Display

Backup files can be loaded and displayed on V9+. Also Alarm backup data can also be displayed.



Link with scheduler function.

Bit operation or macro can be execute with preset time. Log start · stop · data preservation can be operate by associating with log setting,



Alarm Display

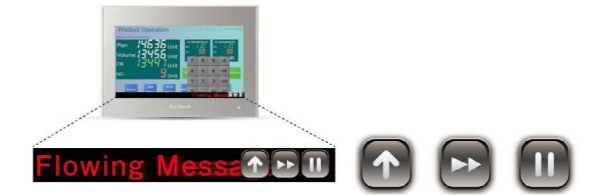
Scrolling of the Alarm Messages

The entire alarm message can be displayed by scrolling the screen with touch and drag.



Running Emergency Messages

Alarm messages run automatically at a specified position when alarms are occurred.



Screen Overlapping

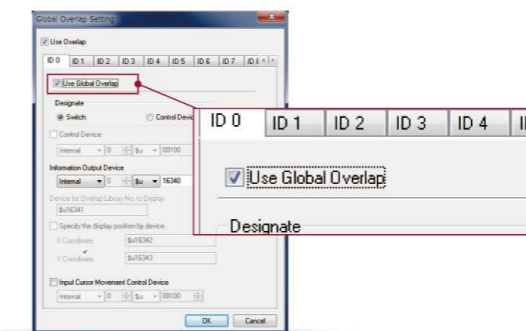
Improved Overlapping Functions

Up to 10 windows can be overlapped on the screen.

All of the 10 windows can be overlapped transparent effect.



All of 10 windows support the global overlapping that can be displayed regardless of the screen switching.



Four kinds of functions such as slide-in and fade-out are available for screen switching and overlapping.

Take advantage of the overlap as a sub-screen display. Without changing the main-screen, you can also scroll the sub-screen only.



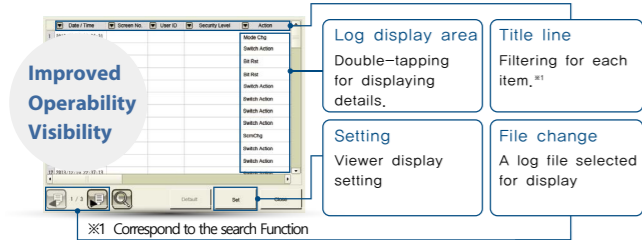
Advanced Function Setting

Adding various setting functions has achieved the simplicity of use. Moreover, visualized all the information so can now respond faster to determine the situation at a glance.

Operation Log

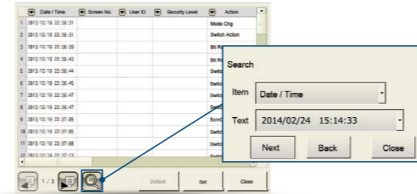
Improved Operation Log Viewer

The operability and visibility of the log viewer have been improved.



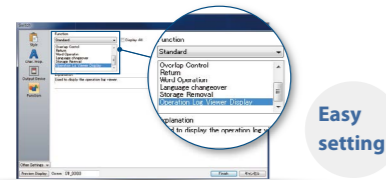
Search Function (Under development)

Operation log can be searched for by specifying an operator or date/time.



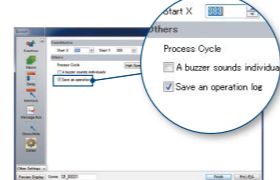
Log Viewer as Standard Specification

The log viewer is simply accessed by selecting it from the drop-down menu. Visibility and operability have been improved by this update.



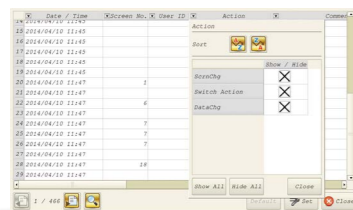
Item Setting

Operating log creation is set for individual switch and input.



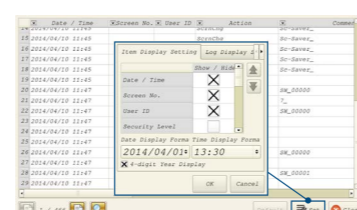
Filter / Sort Settings

Filter and sort can be set for displayed items.



Display Item Settings

It is possible to select items to display in the operation log.



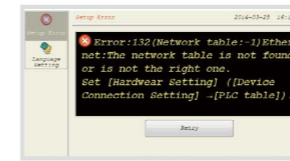
Display Functions

Easy-to-see Error Indication



「Indication of a communication error」

The item with an error is indicated with an error icon at the top right.

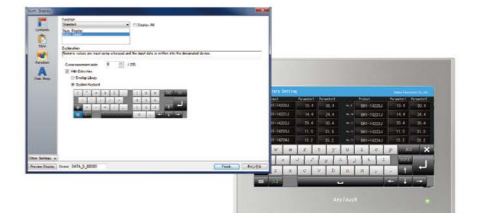


「Improvement of error messages」

An error is described in a sentence for easy comprehension.

System Keyboard Available

A versatile keyboard for inputting upper and lower case letters and numbers is available for easy setting. Select the system keyboard from the set menu.

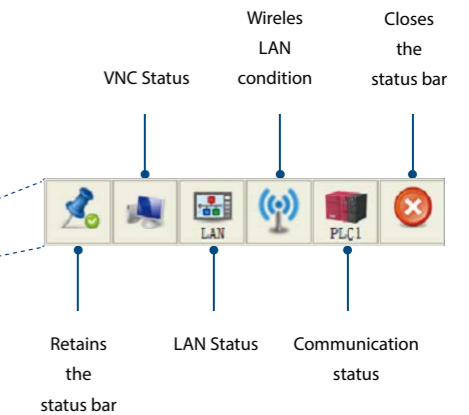


Display of V9p Status

The status of V9p is displayed in the status bar.



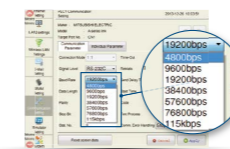
※ The contents of the status indication are subject to change.



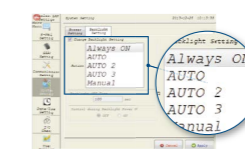
Setting in Local Windows[※]

Easy Monitoring and Setting of Communication, Backlight and Buzzer

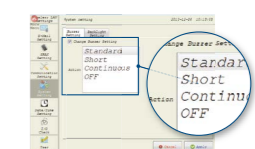
Communication setting



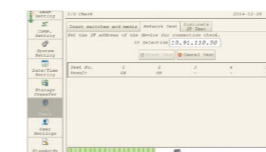
Backlight setting



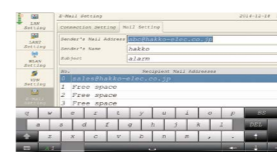
Buzzer setting



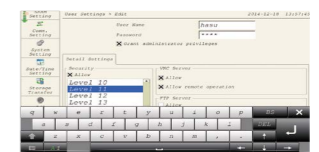
Network test



E-Mail setting



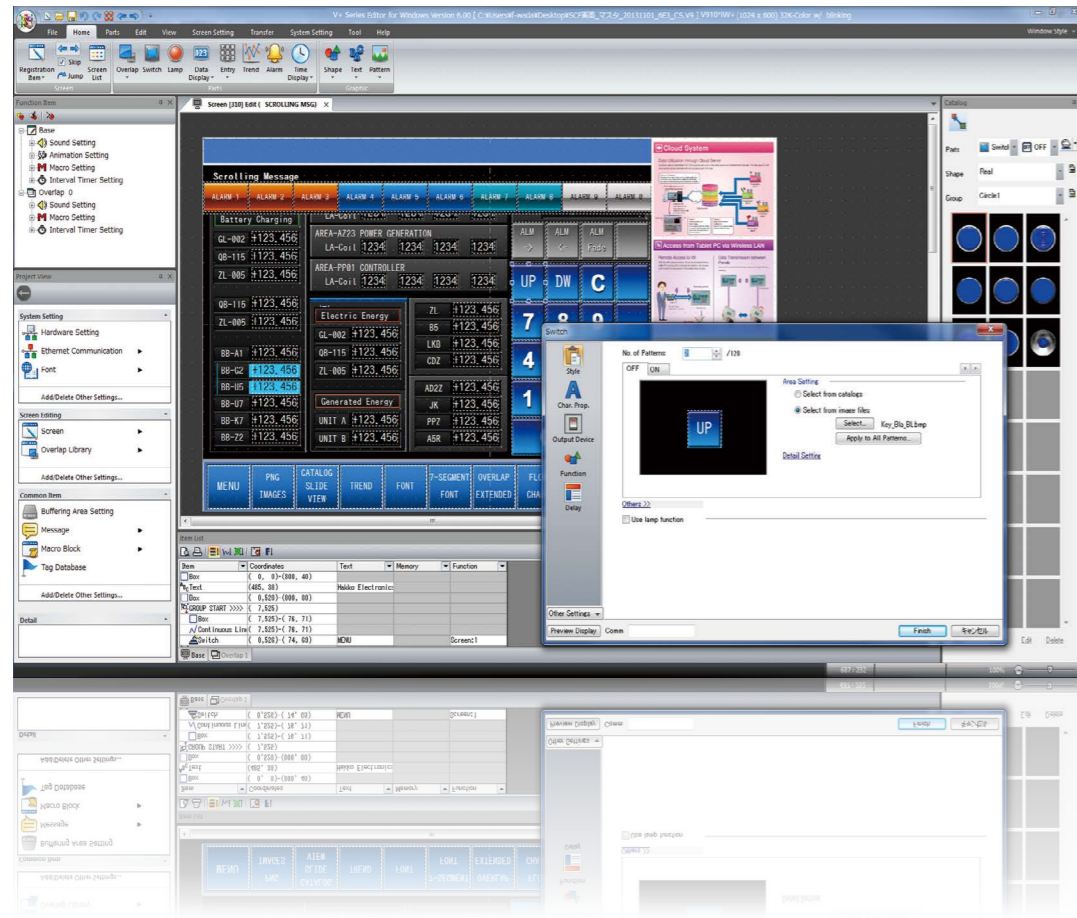
User-defined setting



※ The content of local windows is subject to change.

V-SFT PLUS Ver.6

Improved in visibility and operability makes more perfect implement of screen with only a simple operation.



Item	Specifications
PC	PC/AT compatible machine with Windows
OS*	Windows XP / XP 64bit Edition / Vista 32bit / Vista 64bit / Win7 32bit / Win7 64bit / Win8 32bit / Win8 64bit / Win8.1 32bit / Win8.1 64bit / Win10 32bit / Win10 64bit
CPU	Pentium III 800MHz (Pentium 4 2.0GHz or higher is recommended)
Memory	2.0G or higher
Hard Disk	For installation : 1.8GB or more available space
Disk Driver	DVD-ROM Drive
Display	Resolution 1024 x 768 (XGA) or higher
Color Indication	High Color (16bit) or higher
Others	Microsoft .NET Framework 4.0 or 4.5 is required. (When .NET Framework 4.0 or 4.5 has not been installed in PC, Framework 4.0 is installed automatically.)

* For installing the OS, administrator authority is required.

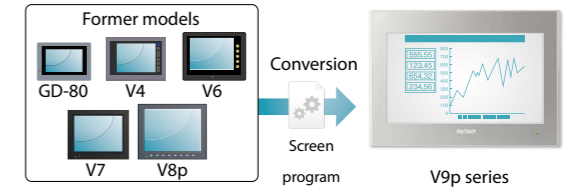
Compatibility with Previous Models

V8p series Compatibility

V-SFT Plus Ver.6 provides intuitive operation, with easy-to-use visual tools and refined displays. In addition to the V9p series, V-SFT Plus Ver.6 is also compatible with the V8p series.

Compatible with Program from Legacy Products

Screen program produced using previous versions of V-SFT Plus can be converted for use in the current model. It is possible to use former screen program assets.



Upgraded Beautiful GUI

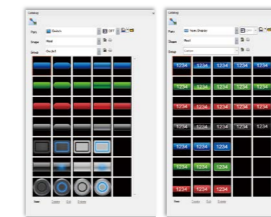
Wider Range of Parts

New Plain part has been added with the update of previous Real/Sign part. Possible to make stylish and beautiful display with only the part that is built already.



Newly added the plain part

Popular simple icons that are used widely on smartphones have been introduced.



Increased picture icons

The number of the picture icons has been increased.



Line Width Setting

The line widths of graphic items and trend items (graph lines, reference lines) can now be set in eight steps. Effective screens can be created using a variety of drawing tools and graph representations.



※ Excluding thick lines

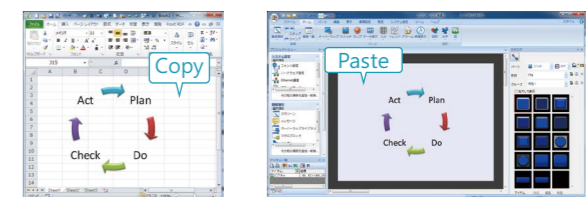
Pasting of an Image File

It is possible to paste a PNG file directly onto the screen. JPG, BMP and GIF formats are also supported as image files, allowing you to create whatever visually impressive screen you choose.



Copy / Paste of Microsoft Office

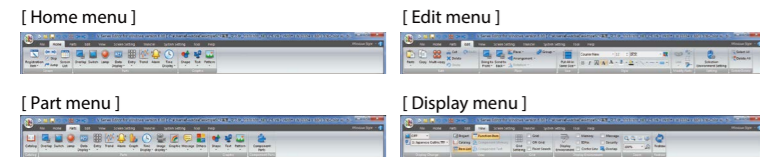
Graphics created in Microsoft Office Word, Excel and PowerPoint can be copied and pasted into V-SFT Plus files by converting them to pictures, patterns or parts.



Upgraded Operation

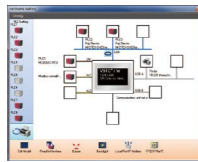
Ribbon Menu

The ribbon-shaped menu bar is available. Enlarged icons are easily visible also improves the operability remarkably.



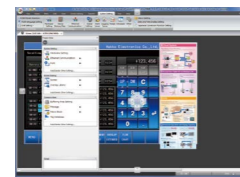
Configuration Menu of the Connected Device

Can be recognized instantly the hardware setting menu from connected devices on V9p/W8p series.



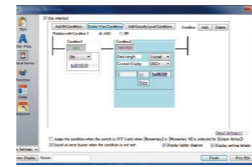
Docking Windows

The project view windows and item view windows can be docked or floated easily.



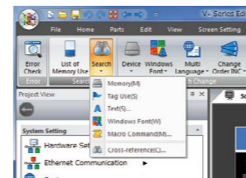
Ladder Diagram for Interlock

Ladder shows at the interlocking tab of switch.



Integration of Search Menu

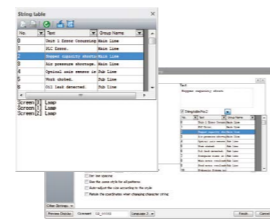
The search menu, which used to be displayed separately, has now been integrated for easy operation.



Character String Table

Text for switches, lamps and other parts can be managed centrally using the character string table. Frequently used text can be registered in the table for easy reference and batch modification.

※ Switches, lamps, text and multi text only.



Facilitation of Screen

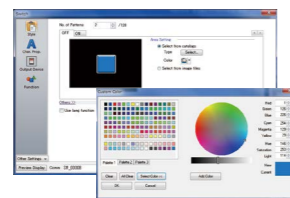
Guided Setting Process

With the help of the clear instructions in the dialog, setting can be conducted smoothly and collectively.



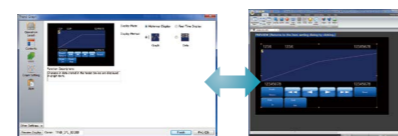
A Wider Range of Colors for 3D Parts

65,536 colors are available for components parts.



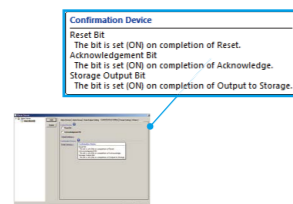
Visualization of Setting

The setting can be confirmed easily even on a PC with low resolution.



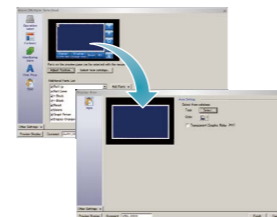
Tool Hints to Support Configuration

Tool hints are provided at many points to support configuration. When you hover the mouse over the item, a hint for operation will appear. You can learn the procedure for configuration without referring to the manual.



Direct Editing with the Item View

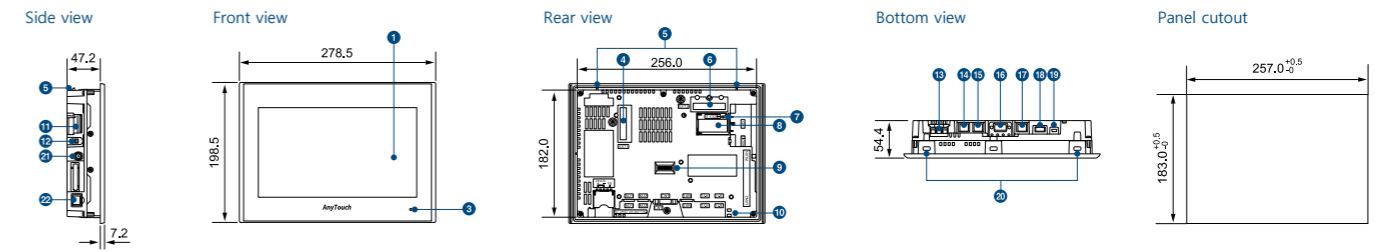
In the item view, an indication range and component parts consisting of various parts including switches are selected. Since there is no need to select various items respectively, smooth and efficient editing is possible.



Dimensions and Part Names

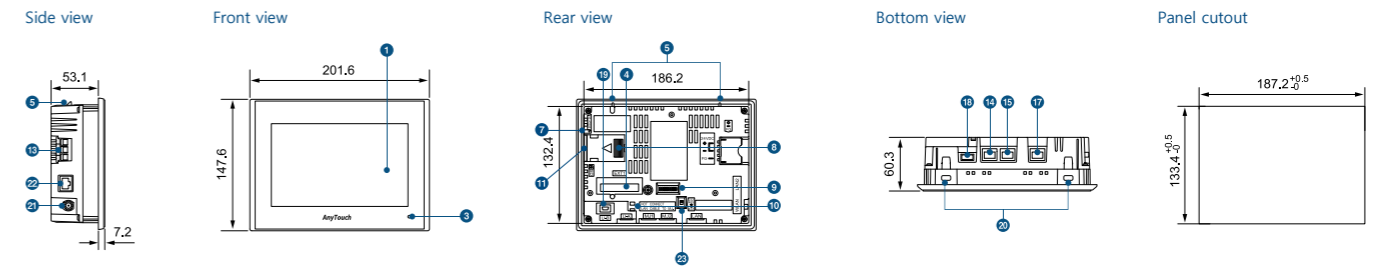
V9101iWp

(Unit:mm)



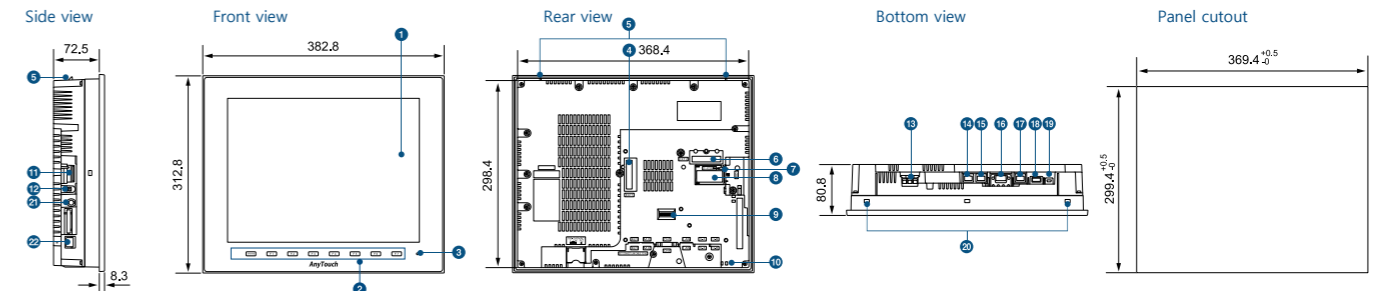
V9071iWp

(Unit:mm)



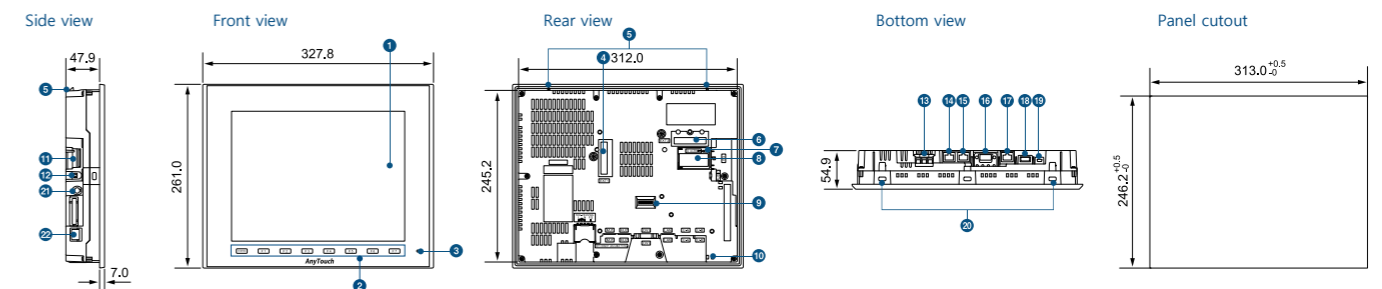
V9150iXp

(Unit:mm)



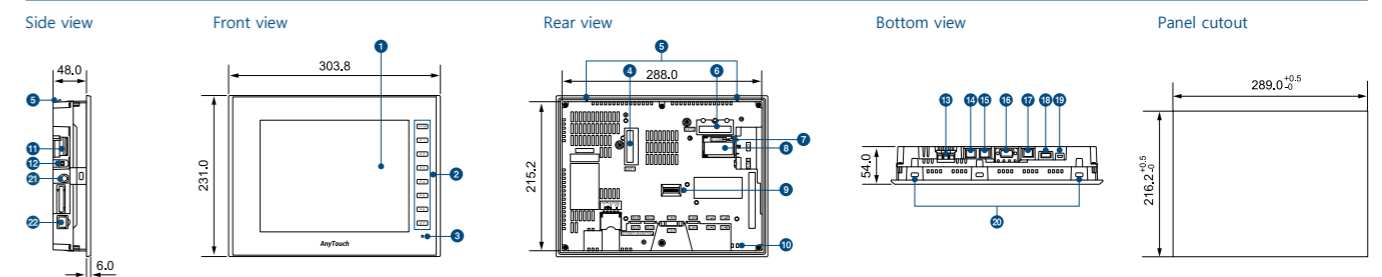
V9120iSp

(Unit:mm)



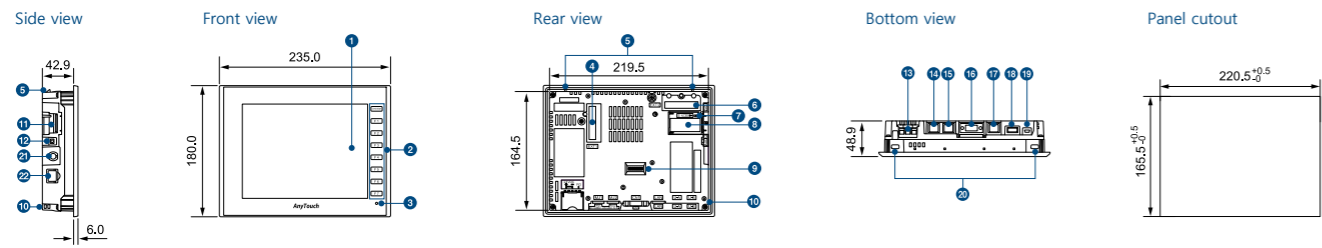
V9100iSp

(Unit:mm)



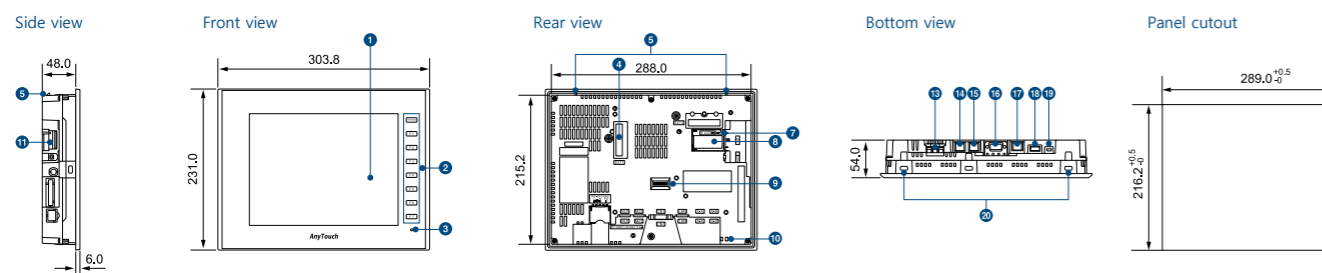
V9080iSDp

(Unit:mm)



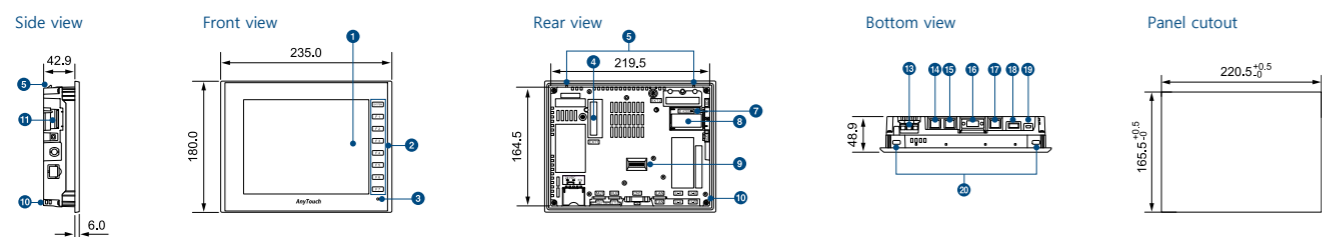
V9100iCp

(Unit:mm)



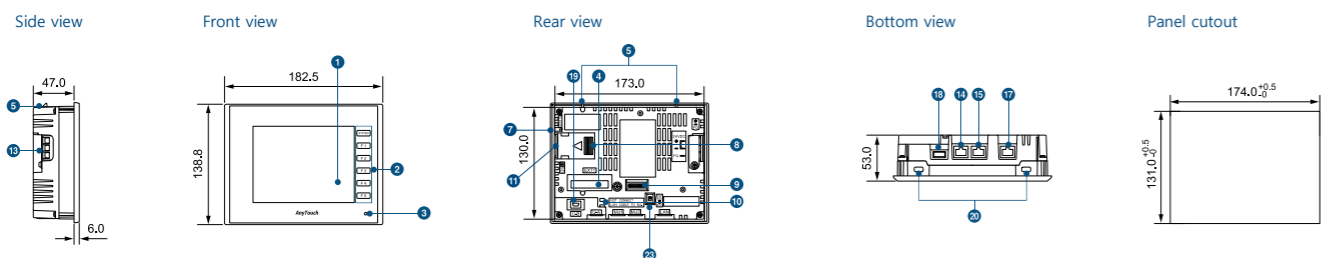
V9080iCDp

(Unit:mm)



V9060iTDp

(Unit:mm)



Part Names

1 Display	7 SD card access LED	13 Power input terminal block	19 USB mini-B (U-B)
2 Function switch	8 Battery holder	14 Modular jack 1(MJ1)	20 Screw hole
3 POWER lamp	9 DIP switch	15 Modular jack 2 (MJ2)	21 Wireless LAN antenna connector (WLAN)
4 Communication unit connector(EXT1)	10 USB cable holding hole	16 PLC connector(CN1)	22 100BASE-TX/10BASE-T port(LAN2)
5 Fall prevention hook	11 SD card connector(SD)	17 100BASE-TX/10BASE-T port(LAN)	23 Slide switch
6 Optional unit connector(EXT2)	12 Soud output connector(AUDIO)	18 USB-A (U-A)	

Optional Units

Option/Extension Units

- GUR_00 (Video input 4CH)
Display images from video cameras on V9p directly.
- GUR_01 (RGB input 1CH)
Display RGB input on V9p.
- GUR_02 (RGB output 1CH)
Displays images of V9p on a monitor.
- GUR_04 (Video input 1CH)
Displays images from a video camera directly.
- GUR_10 (Video input 2CH+RGB input 1CH)
Displays images from video camera and RGB input on V9p simultaneously.
- GUR_11 (RGB input 2CH)
Display RGB images such as PC images through two channels on V9p simultaneously.

Communication Units

- CUR_00 (OPCN_1)
- CUR_01 (T_Link)
- CUR_02 (CC_Link)
- CUR_03 (Ethernet)
- CUR_09 (EtherCAT)
- CUR_04 (PROFIBUS_DP)
- CUR_06 (SX bus)
- CUR_07 (DeviceNet)
- CUR_08 (FL_net)

DUR-00 (Optional unit for V907xiWp, V9060iTDp)

Used for serial connection with D-Sub 9Pin.

Cables


Type	Configuration	Connected to
V_CP	RS.232C modular 8pin - D-Sub 9pin(F) Length: 3m	PC
V6_BCD	RS.232C modular 8pin Length: 3m	Bar code reader
V6_MLT	RS.485 modular 8pin Length: 3m	AnyTouch V9p/V8p/V7/V6
V6_TMP	RS.232C/485 modular 8pin Length: 3,5,10m	Temperature Controller, Inverter, etc.
UA_FR	Type A Length: 1m	Card reader/writer, USB memory, etc.

Software


V-SFT PLUS 6

Windows XP / XP 64bit Edition / Vista 32bit / Vista 64bit / Win7 32bit / Win7 64bit / Win8 32bit / Win8 64bit / Win8.1 32bit / Win8.1 64bit / Win10 32bit / Win10 64bit

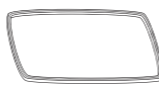
Other Units



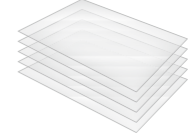
TC_D9 (Terminal converter)
Connects V9p with other units via RS-422/485 terminal.



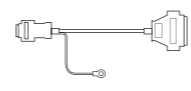
V9_BT
A replacement lithium battery for V9p series. (Except of V907xiWp series and V9060iTDp.)



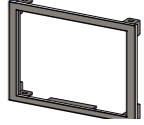
V9xxx_WP
Waterproof gasket for V9p




V9xxx_GS/V9xxx_GSN10
Protection sheets for panels (5 sheets per set). N10 is a non-glare type sheet.




D9_D25
Replacement cable for CN1 cable of V6/V7 series. Cable Length : 0.3M)



Panel adapter (PAD-Vxxx)
Used when fitting V9p into V4/GD_80/GD_65/GD_64 panel cutout. Contact our technical helpdesk for details.



V9_ANT
Antenna for V9p models compatible with wireless LAN.



V7_BT
V907xiWp, V9060iTDp Replacement lithium battery of V7 and V8p series.

General Specifications

Item	V9101iW+	V9071iW+	V9150iX+	V9150iXD+	V9120iS+	V9120iSD+
Power supply	Rated voltage					
	DC24V					
	Permissible range of voltage					
	±10%					
	Permissible momentary power failure					
Within 1ms						
Power Consumption Max. rating)						
27W or less						
Rush Current						
17A or less, 6ms						
Insulation resistance						
DC500V 10MΩ						
Physical environment	Ambient temperature					
	0~50°C ^{※1}					
	Ambient humidity					
	85%RH or less (without dew condensation) ^{※1}					
	Operation altitude					
	2,000m or lower					
	Atmosphere					
Not to be exposed to corrosive gas, or conductive dust						
Storage temperature						
-10~60°C ^{※1}						
Storage humidity						
85%RH or less (without dew condensation) ^{※1}						
Contamination level						
Level 2						
Mechanical operating conditions	Resistance to oscillation					
	JIS B 3502(IEC61131-2) compliant, Vibration frequency : 5~9Hz Half-amplitude: 3.5mm, Vibration frequency: 9~150Hz, Constant acceleration: 9.8m/s ² (1G), X, Y, Z 3 directions (10 times each)					
Resistance to shock						
JIS B 3502(IEC61131-2) compliant, Peak acceleration : 147m/s ² (15G), X, Y, Z 3 directions, 3 times each (18 times in total)						
Electric operating conditions	Resistance to noise					
	Noise voltage : 1000Vp-p, Pulse width : 1μs, Pulse rise time : 1ns					
Resistance to static discharge						
Complies with IEC61000-4-2, Contact : 6kV, Air : 8kV						
Installation conditions	Grounding					
	3 Class resistance, FG/SG separation					
	Structure					
	Protection structure : Front case : IP66, TYPE4X/13 ^{※7※8} (when water-proof gasket is used), Rear case : IP20, Single unit, Installation method : panel mounting					
	Cooling system					
	Natural air cooling					
Dimensions W*H*D (mm)						
278.5×198.5×54.4						
Panel cutout (mm)						
257.0×183.0(+0.5/-0)						
Weight						
Approx. 1.7kg						
Case color						
Light gray						
Material						
PC resin						

※1 Wet-bulb temperature should be 39°C or lower to prevent malfunction.

Performance Specifications

Item	V9101iW+	V9071iW+	V9150iX+	V9120iSD+
Screen memory(FROM)	64MB			
Backup memory(SRAM)	800KB			
Display	Display device			
	TFT color LCD			
	Resolution			
	1024×600			
	Display size			
10.1" Wide				
Colors				
1.67 million ^{※2}				
Backlight				
LED				
Backlight life				
50,000 hours				
Touch switch	Type			
Capacitance				
Function switch	Quantity			
8				
External interface	D-Sub 9-pin(CN1) ^{※3}			
	RS-232C-RS-422/485 Asynchronous type Data length : 7, 8 bits Parity : even, odd, none Stop bit : 1, 2 bits, Baud rate : 4800, 9600, 19200, 38400, 57600, 76800, 115200, 187500 ^{※4} bps			
	Modular 8-pin (MJ1/MJ2)			
	RS-232C-RS-422/485(two-wire system) ^{※5} . Asynchronous type. Data length : 7, 8bits Parity : even, odd, none Stop bit : 1, 2 bits Baud rate: 4800, 9600, 19200, 38400, 57600, 76800, 115200bps			
	SD Card			
	One card slot provided as standard			
	Ethernet			
2CH, Baud rate : 100Mbps, 10Mbps				
Wireless LAN				
Complies with 1EEE802.11b/g/n (2.4GHz) ^{※6}				
USB				
Type A, Type mini-B (Ver.2.0)				
Sound output				
1CH provided as standard				
Clock	Backup period			
	5 years (Ambient temperature 25°C)			
Calendar accuracy				
Gap ±90 sec. per month (Ambient temperature 25°C, When the battery is backed up)				
Standard	CE marking ^{※7}			
	EN61000-6-2, EN6100-6-4			
	UL-cUL ^{※7}			
UL508, ANSI/ISA12.12.01 ^{※9}				
KC				
Compliant				
Radio Act ^{※6}				
Japan: TELEC USA: FCC Canada: IC RSS				

※2 : Only for pictures, 3D parts and videos. Other items are displayed in 65,536 colors. ※3 : Optional unit (DUR-00) is required for the V9071iWp and V9060iTDp.

※4 : Only for Siemens MPI (Incompatible with DUR-00). ※5 : 187,500bps (four-wire system) for the V9071iWp and V9060iTDp. ※6 : Wireless LAN-compatible products only.

General Specifications

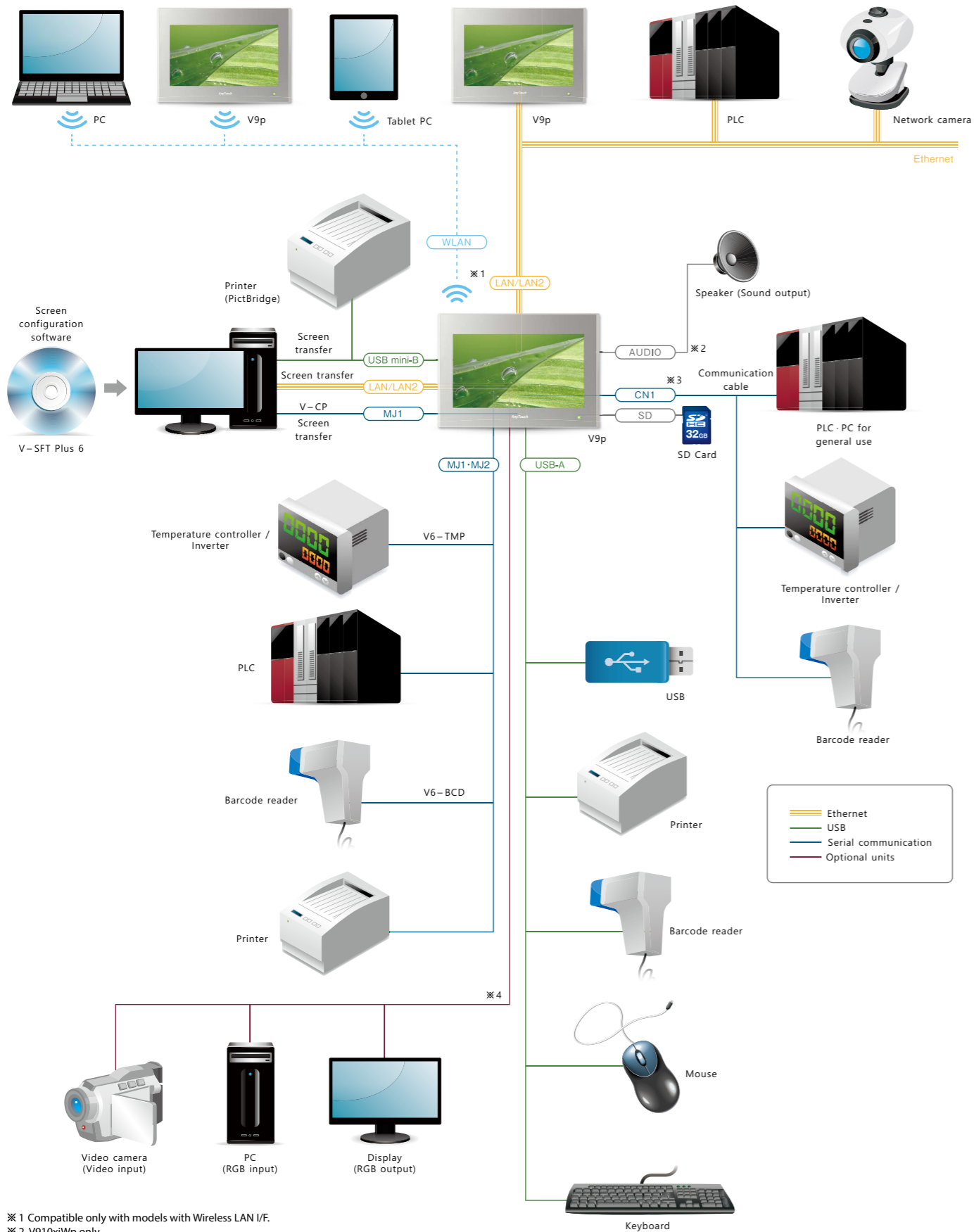
Item	V9100iSp	V9100iSDp	V9080iSDp	V9100iCp	V9100iCDp	V9080iCDp	V9060iTDp
Power supply	Rated voltage						
	AC100~240V						
	Permissible range of voltage						
	-15%, +10%						
	Permissible momentary power failure						
Within 20ms (AC100V or higher)							
Power Consumption Max. rating)							
70VA or less							
Rush Current							
30A or less, 3ms							
Insulation resistance							
DC500V 10MΩ or higher							
Physical environment	Ambient temperature						
	0~50°C ^{※1}						
	Ambient humidity						
	85%RH or less (without dew condensation) ^{※1}						
	Operation altitude						
	2,000m or lower						
	Atmosphere						
Not to be exposed to corrosive gas, or conductive dust							
Storage temperature							
-10~60°C ^{※1}							
Storage humidity							
85%RH or less (without dew condensation) ^{※1}							
Contamination level							
Level 2							
Mechanical operating conditions	Resistance to oscillation						
	JIS B 3502(IEC61131-2) compliant, Vibration frequency : 5~9Hz Half-amplitude: 3.5mm, Vibration frequency: 9~150Hz, Constant acceleration: 9.8m/s ² (1G), X, Y, Z 3 directions (10 times each)						
Resistance to shock							
JIS B 3502(IEC61131-2) compliant, Peak acceleration : 147m/s ² (15G), X, Y, Z 3 directions, 3 times each (18 times in total)							
Electric operating conditions	Resistance to noise						
	Noise voltage : 1500Vp-p, Pulse width : 1μs, Pulse rise time : 1ns						
Resistance to static discharge							
Complies with IEC61000-4-2, Contact : 6kV, Air : 8kV							
Installation conditions	Grounding						
	3 Class resistance, FG/SG separation						
	Structure						
	Protection structure : Front case : IP66, TYPE4X/13 ^{※7※8} (when water-proof gasket is used), Rear case : IP20, Single unit, Installation method : panel mounting						
	Cooling system						
	Natural air cooling						
Dimensions W*H*D (mm)							
303.8×231.0×54.0							
Panel cutout (mm)							
289.0×216.2(+0.5/-0)							
Weight							
Approx. 2.0kg							
Case color							
Light gray							
Material							
PC resin							

Performance Specifications

Item	V9100iSp	V9080iSDp	V9100iCp	V9080iCDp	V9060iTDp
Screen memory(FROM)	64MB				
Backup memory(SRAM)	800KB				
Display	Display device				
	TFT color LCD				
	Resolution				
	800×600				
	Display size				
	10.4" 8.4" 10.4" 8.4" 5.7"				
Colors					
1.67 million ^{※2}					
Backlight					
LED					
Backlight life					
70,000 hours					
Touch switch	Type				
Analog resistance film					
Function switch	Quantity				
8					
External interface	D-Sub 9-pin(CN1) ^{※3}				
	RS-232C-RS-422/485 Asynchronous type Data length : 7, 8 bits Parity : even, odd, none Stop bit : 1, 2 bits, Baud rate : 4800, 9600, 19200, 38400, 57600, 76800, 115200, 187500 ^{※4} bps				
	Modular 8-pin (MJ1/MJ2)				
	RS-232C-RS-422/485(two-wire system) ^{※5} . Asynchronous type. Data length : 7, 8bits Parity : even, odd, none Stop bit : 1, 2 bits Baud rate: 4800, 9600, 19200, 38400, 57600, 76800, 115200bps				
	SD Card				
	One card slot provided as standard				
	Ethernet				
1CH, Baud rate : 100Mbps, 10Mbps					
Wireless LAN					
Complies with 1EEE802.11b/g/n (2.4GHz) ^{※6}					
USB					
Type A, Type mini-B (Ver.2.0)					
Sound output					
1CH provided as standard					
Clock	Backup period				
	5 years (Ambient temperature 25°C)				
Calendar accuracy					
Gap ±90 sec. per month (Ambient temperature 25°C, When the battery is backed up)					
Standard	CE marking ^{※7}				
	EN61000-6-2, EN61000-6-4				
	UL-cUL ^{※7}				
UL508, ANSI/ISA12.12.01 ^{※9}					
KC					
Compliant					
Radio Act ^{※6}					
Japan: TELEC					

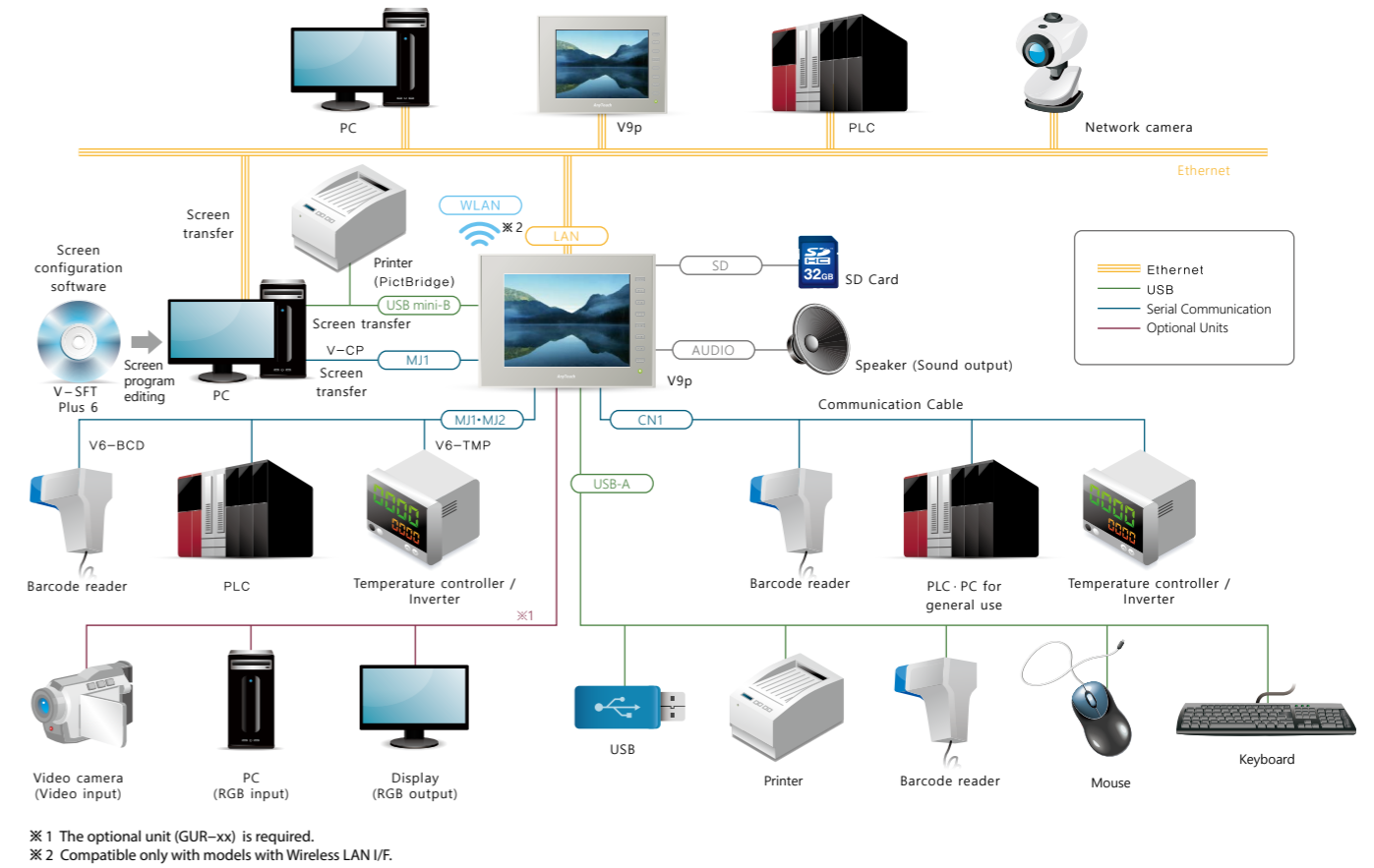
※7 : DC products only. ※8 V9101iWp : Hardware of Ver.c or later, V9120iSDp/V9100iSDp/V9080iSDp/V9100iCDp/V9080iCDp : Hardware of Ver.b or later, V9071iWp/V9150iXDp/V9060iTDp : All versions ※9 : V9120iSDp/V9100iSDp/V9080iSDp : Hardware of Ver.b or later, V9060iTDp : All versions

Advanced Model System Configuration

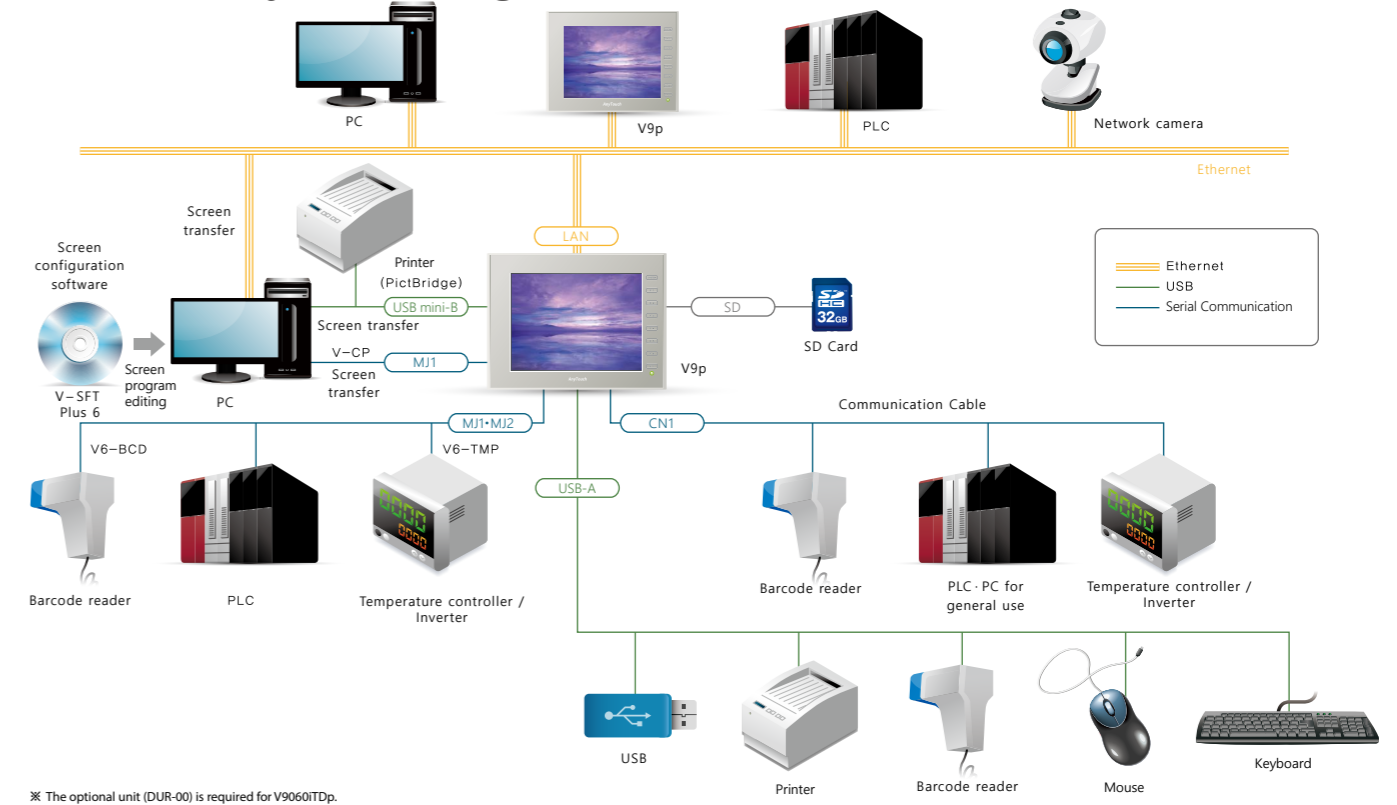


※ 1 Compatible only with models with Wireless LAN I/F.
 ※ 2 V910xiWp only
 ※ 3 Optional unit DUR-00 is required when using V907xiWp series.
 ※ 4 V910xiWp series only. Optional unit "GUR-XX" is required.

Standard Model System Configuration



Lite Model System Configuration



Lineup Details

Advanced

Model	Display Size	Resolution	Touch Switch	Communication Network	Video RGB	AUDIO Output	Wireless LAN	Extended Cable LAN	UL508	CE	KC	Power	Delivery Standard: ○ Made to order: △	
V9101iWRLDp	10.1" Wide	1024 X 600	Capacitance	○	○	○	○	○	○	○	○	DC	○	
V9101iWLDp				○	○	○	-	○	○	○	○	○	DC	○
V9100iWRLDp			Analog resistance film	○	○	○	○	○	○	○	○	○	DC	△
V9100iWLDp				○	○	○	-	○	○	○	○	○	DC	△
V9071iWRLDp	7" Wide	800 X 480	Capacitance	○	-	-	○	○	○	○	○	DC	○	
V9071iWLDp				○	-	-	-	○	○	○	○	○	DC	○

Standard

Model	Display Size	Resolution	Touch Switch	Communication Network	Video RGB	AUDIO Output	Wireless LAN	Extended Cable LAN	UL508	CE	KC	Power	Delivery Standard: ○ Made to order: △		
V9150iXp	15"	1024 X 768	Analog resistance film	○	○	○	-	-	-	-	○	AC	○		
V9150iXDp				○	○	○	-	-	○	○	○	○	DC	○	
V9150iXLDp				○	○	○	-	○	○	○	○	○	○	DC	△
V9120iSp	12.1"	800 X 600	Analog resistance film	○	○	○	-	-	-	-	○	AC	○		
V9120iSDp				○	○	○	-	-	○	○	○	○	DC	○	
V9120iSLDp				○	○	○	-	○	○	○	○	○	○	DC	△
V9100iSp				10.4"	800 X 600	Analog resistance film	○	○	○	-	-	-	-	○	AC
V9100iSDp	○	○	○				-	-	○	○	○	○	DC	○	
V9100iSLDp	○	○	○				-	○	○	○	○	○	○	DC	△
V9080iSDp	8.4"	800 X 600	Analog resistance film				○	○	○	-	-	○	○	○	DC

Lite

Model	Display Size	Resolution	Touch Switch	Communication Network	Video RGB	AUDIO Output	Wireless LAN	Extended Cable LAN	UL508	CE	KC	Power	Delivery Standard: ○ Made to order: △
V9100iCp	10.4"	640 X 480	Analog resistance film	○	-	-	-	-	-	-	○	AC	○
V9100iCDp		640 X 480	Analog resistance film	○	-	-	-	-	○	○	○	DC	○
V9080iCDp	8.4"	640 X 480	Analog resistance film	○	-	-	-	-	○	○	○	DC	○
V9060iTDp	5.7"	640 X 480	Analog resistance film	○	-	-	-	-	○	○	○	DC	○

Optional Unit List

Type	Product	Compatible Model									
		Advanced		Standard			Lite				
		V9101iWp	V9071iWp	V9150iXp	V9120iSp	V9100iSp	V9080iSp	V9100iCp	V9080iCDp	V9060iTDp	
Configuration Software											
V_SFT Plus 6	V8p/V9p configuration software(Manual not included) Ver.6	○	○	○	○	○	○	○	○	○	
Optional Units											
GUR_00	Video 4CH input	○		○	○	○	○				
GUR_01	RGB 1CH input	○		○	○	○	○				
GUR_02	RGB 1CH output	○		○	○	○	○				
GUR_04	Video 1CH input	○		○	○	○	○				
GUR_10	Video 2CH input · RGB 1CH input	○		○	○	○	○				
GUR_11	RGB 2CH input	○		○	○	○	○				
DUR_00	Optional unit for V9071iWp / V9060iTDp		○							○	
Communication Units											
CUR_00	OPCN-1	○	○	○	○	○	○	○	○	○	
CUR_01	T-Link	○	○	○	○	○	○	○	○	○	
CUR_02	CC-Link	○	○	○	○	○	○	○	○	○	
CUR_03	Ethernet	○	○	○	○	○	○	○	○	○	
CUR_04	PROFIBUS-DP	○	○	○	○	○	○	○	○	○	
CUR_06	SX Bus	○	○	○	○	○	○	○	○	○	
CUR_07	DeviceNet	○	○	○	○	○	○	○	○	○	
CUR_08	FL-net	○	○	○	○	○	○	○	○	○	
CUR_09	EtherCAT	○	○	○	○	○	○	○	○	○	
Cables											
V_CP	Screen transfer cable (3M)	○	○	○	○	○	○	○	○	○	
UA_FR	USB-A cable (1M)	○	○	○	○	○	○	○	○	○	
V6_MLT	Multi-link 2 master cable (3M)	○	○	○	○	○	○	○	○	○	
V6_TMP	Temperature controller cable (3M)	○	○	○	○	○	○	○	○	○	
V6_TMP_5M	Temperature controller cable (5M)	○	○	○	○	○	○	○	○	○	
V6_TMP_10M	Temperature controller cable (10M)	○	○	○	○	○	○	○	○	○	
V6_BCD	Bar code reader cable (3M)	○	○	○	○	○	○	○	○	○	
D9_MB_CPUQ_2M	MITSUBISHI ELECTRIC A series/QnA series CPU(Dsub25) RS_422	○	△*	○	○	○	○	○	○	○	△*
D9_MB_CPUQ_3M		○	△*	○	○	○	○	○	○	○	△*
D9_MB_CPUQ_5M		○	△*	○	○	○	○	○	○	○	△*
D9_MB_CPUQ_10M		○	△*	○	○	○	○	○	○	○	△*
D9_MB_CPUQ_15M	MITSUBISHI ELECTRIC Q series CPU(Mini DIN6) RS_232C	○	△*	○	○	○	○	○	○	○	△*
D9_QCPU2_2M		○	△*	○	○	○	○	○	○	○	△*
D9_QCPU2_3M		○	△*	○	○	○	○	○	○	○	△*
D9_QCPU2_5M		○	△*	○	○	○	○	○	○	○	△*
D9_QCPU2_10M	MITSUBISHI ELECTRIC Link unit(Dsub9) RS_232C	○	△*	○	○	○	○	○	○	○	△*
D9_QCPU2_15M		○	△*	○	○	○	○	○	○	○	△*
D9_Mi2_09_2M		○	△*	○	○	○	○	○	○	○	△*
D9_Mi2_09_3M		○	△*	○	○	○	○	○	○	○	△*
D9_Mi2_09_5M	MITSUBISHI ELECTRIC FX series CPU(Mini DIN8) RS_422	○	△*	○	○	○	○	○	○	○	△*
D9_Mi2_09_10M		○	△*	○	○	○	○	○	○	○	△*
D9_Mi2_09_15M		○	△*	○	○	○	○	○	○	○	△*
D9_Mi4_FX_2M		○	△*	○	○	○	○	○	○	○	△*
D9_Mi4_FX_3M	FUJI ELECTRIC SPH CPU RS_485 (4-wire)	○	△*	○	○	○	○	○	○	○	△*
D9_Mi4_FX_5M		○	△*	○	○	○	○	○	○	○	△*
D9_Mi4_FX_10M		○	△*	○	○	○	○	○	○	○	△*
D9_Mi4_FX_15M		○	△*	○	○	○	○	○	○	○	△*
D9_FU_SPHCPU_2M	FUJI ELECTRIC SPB CPU RS_485 (4-wire)	○	△*	○	○	○	○	○	○	○	△*
D9_FU_SPHCPU_3M		○	△*	○	○	○	○	○	○	○	△*
D9_FU_SPHCPU_5M		○	△*	○	○	○	○	○	○	○	△*
D9_FU_SPHCPU_10M		○	△*	○	○	○	○	○	○	○	△*
D9_D25	Dsub9_Dsub25 conversion cable (0.3M)	○	△*	○	○	○	○	○	○	○	△*
MJ2_PLC	MJ2_Dsub25 conversion cable		○								○
Communication Terminal Block											
TC_D9	V9p/V8p terminal converter	○	△*	○	○	○	○	○	○	○	△*
Battery											
V9_BT	Replacement battery for V9p	○		○	○	○	○	○	○	○	○
V7_BT	Replacement lithium battery for V9071iWp / V9060iTDp		○								○
Wireless LAN Antenna											
V9_ANT	V9p external antenna cable (3m)	○	○								
Protection Sheets											
V715_GS	V9150iXp/V815p/V715p protection sheets			○							
V715_GSN10	V9150iXp/V815p/V715p protection sheets (Non-glare)			○							
V912S_GS	V9120iSp protection sheets				○						
V912S_GSN10	V9120iSp protection sheets (Non-glare)				○						
V910S_GS	V9100iSp/V9100iCp protection sheets					○					
V910S_GSN10	V9100iSp/V9100iCp protection sheets (Non-glare)					○					
V908S_GS	V9080iSp/V9080iCp protection sheets						○				
V908S_GSN10	V9080iSp/V9080iCp protection sheets (Non-glare)						○				
V906T_GS	V9060iTDp protection sheets										○
V906T_GSN10	V9060iTDp protection sheets (Non-glare)										○

* Optional unit DUR-00 is required.

Temperature/Servo/Inverter Communication Driver List

Manufacturer	Models	Connection form		Compatible models		
		1:1	1:n Multi-drop	V9p	V8ip	V8p
RS Automation	CSD5 (MODBUS RTU)	✓	✓	✓	✓	✓
	Moscon-F50 (MODBUS RTU)	✓	✓	✓	✓	✓
Agilent	4263 series	✓	✓	✓	✓	✓
ASAHI ENGINEERING	Stepping Motor	✓	✓	✓	✓	✓
	SDC10	✓	✓	✓	✓	✓
	SDC15	✓	✓	✓	✓	✓
	SDC20	✓	✓	✓	✓	✓
	SDC21	✓	✓	✓	✓	✓
	SDC25/26	✓	✓	✓	✓	✓
	SDC30/31	✓	✓	✓	✓	✓
	SDC35/36	✓	✓	✓	✓	✓
	SDC45/46	✓	✓	✓	✓	✓
	SDC40A	✓	✓	✓	✓	✓
	SDC40G	✓	✓	✓	✓	✓
	DMC10	✓	✓	✓	✓	✓
	DMC50 (COM)	✓	✓	✓	✓	✓
	AHC2001	✓	✓	✓	✓	✓
	AHC2001+DCP31/32	✓	✓	✓	✓	✓
	DCP31/32	✓	✓	✓	✓	✓
	NX (CPL)	✓	✓	✓	✓	✓
	NX (MODBUS RTU)	✓	✓	✓	✓	✓
	NX (MODBUS TCP/IP)	✓	✓	✓	✓	✓
A&D	AD4402 (MODBUS RTU)	✓	✓	✓	✓	✓
	AD4404 (MODBUS RTU)	✓	✓	✓	✓	✓
Banner	Presence PLUS (Ethernet/IP (TCP/IP))	✓	✓	✓	✓	✓
Bosh Rexroth	Indra Drive	✓	✓	✓	✓	✓
	LT400 series (MODBUS RTU)	✓	✓	✓	✓	✓
	DP1000	✓	✓	✓	✓	✓
	DB1000B (MODBUS RTU)	✓	✓	✓	✓	✓
CHINO	KR2000 (MODBUS RTU)	✓	✓	✓	✓	✓
	LT230 (MODBUS RTU)	✓	✓	✓	✓	✓
	LT300 (MODBUS RTU)	✓	✓	✓	✓	✓
	LT830 (MODBUS RTU)	✓	✓	✓	✓	✓
DELTA TAU DATA SYSTEMS	PMAC	✓	✓	✓	✓	✓
	PMAC (Ethernet TCP/IP)	✓	✓	✓	✓	✓
	PYX (MODBUS RTU)	✓	✓	✓	✓	✓
	PXR (MODBUS RTU)	✓	✓	✓	✓	✓
	PXF (MODBUS RTU)	✓	✓	✓	✓	✓
	PXG (MODBUS RTU)	✓	✓	✓	✓	✓
	PXH (MODBUS RTU)	✓	✓	✓	✓	✓
	PUM (MODBUS RTU)	✓	✓	✓	✓	✓
	F-MPC04P (loader)	✓	✓	✓	✓	✓
	F-MPC series/FePSU	✓	✓	✓	✓	✓
	FVR-E11S	✓	✓	✓	✓	✓
	FVR-E11S (MODBUS RTU)	✓	✓	✓	✓	✓
	FVR-C11S (MODBUS RTU)	✓	✓	✓	✓	✓
	FRENIC5000 G11S/P11S	✓	✓	✓	✓	✓
	FRENIC5000 G11S/P11S (MODBUS RTU)	✓	✓	✓	✓	✓
	FRENIC5000 VG7S (MODBUS RTU)	✓	✓	✓	✓	✓
	FRENIC-Ace (MODBUS RTU)	✓	✓	✓	✓	✓
	FRENIC-HVAC/AQUA (MODBUS RTU)	✓	✓	✓	✓	✓
	FRENIC-Mini (MODBUS RTU)	✓	✓	✓	✓	✓
	FRENIC-Eco (MODBUS RTU)	✓	✓	✓	✓	✓
	FRENIC-Multi (MODBUS RTU)	✓	✓	✓	✓	✓
	FRENIC-MEGA (MODBUS RTU)	✓	✓	✓	✓	✓
	FRENIC-MEGA SERVO (MODBUS RTU)	✓	✓	✓	✓	✓
	FRENIC-VG1 (MODBUS RTU)	✓	✓	✓	✓	✓
	FRENIC series (loader)	✓	✓	✓	✓	✓
	HFR-C9K	✓	✓	✓	✓	✓
	HFR-C11K	✓	✓	✓	✓	✓
	HFR-K1K	✓	✓	✓	✓	✓
	PPMC (MODBUS RTU)	✓	✓	✓	✓	✓
	FALDIC-a series	✓	✓	✓	✓	✓
	FALDIC-W series	✓	✓	✓	✓	✓
	PH series	✓	✓	✓	✓	✓
	PHR (MODBUS RTU)	✓	✓	✓	✓	✓
	WA5000	✓	✓	✓	✓	✓
	APR-N (MODBUS RTU)	✓	✓	✓	✓	✓
	ALPHA5 (MODBUS RTU)	✓	✓	✓	✓	✓
	ALPHA5 Smart (MODBUS RTU)	✓	✓	✓	✓	✓
	WE1MA (Ver. A)(MODBUS RTU)	✓	✓	✓	✓	✓
	WE1MA (Ver. B)(MODBUS RTU)	✓	✓	✓	✓	✓
	WSZ series	✓	✓	✓	✓	✓
	WSZ series (Ethernet)	✓	✓	✓	✓	✓
Gammflux	TTC2100	✓	✓	✓	✓	✓
Hitachi Industrial Equipment Systems	SJ300 series	✓	✓	✓	✓	✓
	SJ700 series	✓	✓	✓	✓	✓
	X-SEL controller	✓	✓	✓	✓	✓
IAI	ROBO CYLINDER (RCP2/ERC)	✓	✓	✓	✓	✓
	ROBO CYLINDER (RCS/E-CON)	✓	✓	✓	✓	✓
	PCON/ACON/SCON (MODBUS RTU)	✓	✓	✓	✓	✓
KOGANEI	IBFL-TC	✓	✓	✓	✓	✓
Lenze	Servo Drive 9400 (Ethernet TCP/IP)	✓	✓	✓	✓	✓
	FR-500	✓	✓	✓	✓	✓
	FR-V500	✓	✓	✓	✓	✓
	MR-J2S-A	✓	✓	✓	✓	✓
	MR-J3-A	✓	✓	✓	✓	✓
	MR-J3-T	✓	✓	✓	✓	✓

Manufacturer	Models	Connection form		Compatible models		
		1:1	1:n Multi-drop	V9p	V8ip	V8p
MITSUBISHI ELECTRIC	FR-E700	✓	✓	✓	✓	✓
MOOG	J124-04x series	✓	✓	✓	✓	✓
M-SYSTEM	R1M series (MODBUS RTU)	✓	✓	✓	✓	✓
	E5AK	✓	✓	✓	✓	✓
	E5AK-T	✓	✓	✓	✓	✓
	E5AN/E5EN/E5CN/E5GN	✓	✓	✓	✓	✓
	E5AR/E5ER	✓	✓	✓	✓	✓
	E5CK	✓	✓	✓	✓	✓
	E5CK-T	✓	✓	✓	✓	✓
	E5CN-HT	✓	✓	✓	✓	✓
OMRON	E5EK	✓	✓	✓	✓	✓
	E5ZD	✓	✓	✓	✓	✓
	E5ZE	✓	✓	✓	✓	✓
	E5ZN	✓	✓	✓	✓	✓
	V600/620/680	✓	✓	✓	✓	✓
	KM20	✓	✓	✓	✓	✓
	KM100	✓	✓	✓	✓	✓
	V680S (Ethernet TCP/IP)	✓	✓	✓	✓	✓
	High-efficiency AR series (MODBUS RTU)	✓	✓	✓	✓	✓
Oriental Motor	CRK series (MODBUS RTU)	✓	✓	✓	✓	✓
	LP-400	✓	✓	✓	✓	✓
Panasonic	KW series	✓	✓	✓	✓	✓
	MINAS A4 series	✓	✓	✓	✓	✓
	SR-Mini (MODBUS RTU)	✓	✓	✓	✓	✓
	CB100/CB400/CB500/CB700/CB900 (MODBUS RTU)	✓	✓	✓	✓	✓
	SR-Mini (Standard Protocol)	✓	✓	✓	✓	✓
	REX-F400/F700/F900 (Standard Protocol)	✓	✓	✓	✓	✓
RKC	REX-F9000 (Standard Protocol)	✓	✓	✓	✓	✓
	SRV (MODBUS RTU)	✓	✓	✓	✓	✓
	MA900/MA901 (MODBUS RTU)	✓	✓	✓	✓	✓
	SRZ (MODBUS RTU)	✓	✓	✓	✓	✓
	FB100/FB400/FB900 (MODBUS RTU)	✓	✓	✓	✓	✓
SANMEI	Cuty Axis	✓	✓	✓	✓	✓
SanRex	DC AUTO (HKD type)	✓	✓	✓	✓	✓
SHARP	DS-30D	✓	✓	✓	✓	✓
	DS-32D	✓	✓	✓	✓	✓
SHIMADEN	SHIMADEN standard protocol	✓	✓	✓	✓	✓
	C series	✓	✓	✓	✓	✓
	FC series	✓	✓	✓	✓	✓
	GC series	✓	✓	✓	✓	✓
	DCL-33A	✓	✓	✓	✓	✓
	JCy-300 series	✓	✓	✓	✓	✓
	PC-900	✓	✓	✓	✓	✓
	PCD-33A	✓	✓	✓	✓	✓
	ACS-13A	✓	✓	✓	✓	✓
	ACD/ACR series	✓	✓	✓	✓	✓
	WCL-13A	✓	✓	✓	✓	✓
Siemens	S120 (Ethernet ISOTCP)	✓	✓	✓	✓	✓
SUS	XA-A*	✓	✓	✓	✓	✓
	TTM-000	✓	✓	✓	✓	✓
	TTM-00BT	✓	✓	✓	✓	✓
	TTM-200 (MODBUS RTU)	✓	✓	✓	✓	✓
Tokyo Chokoku Marking Products	MB3315/1010	✓	✓	✓	✓	✓
	VF-S7	✓	✓	✓	✓	✓
	VF-S9	✓	✓	✓	✓	✓
	VF-S11	✓	✓	✓	✓	✓
	VF-S15	✓	✓	✓	✓	✓
	VF-A7	✓	✓	✓	✓	✓
TOSHIBA	VF-AS1	✓	✓	✓	✓	✓
	VF-P7	✓	✓	✓	✓	✓
	VF-PS1	✓	✓	✓	✓	✓
	VF-FS1	✓	✓	✓	✓	✓
	VF-MB1	✓	✓	✓	✓	✓
	VF-NC1	✓	✓	✓	✓	✓
	VF-NC3	✓	✓	✓	✓	✓
TOSHIBA MACHINE	VELCONIC series	✓	✓	✓	✓	✓
ULVAC	G-TRAN series	✓	✓	✓	✓	✓
	F340A	✓	✓	✓	✓	✓
	F371	✓	✓	✓	✓	✓
	F800	✓	✓	✓	✓	✓
UNIPULSE	F805A	✓	✓	✓	✓	✓
	F720A	✓	✓	✓	✓	✓
YAMAHA	RCX142	✓	✓	✓	✓	✓
	UT100	✓	✓	✓	✓	✓
	UT750	✓	✓	✓	✓	✓
	UT550	✓	✓	✓	✓	✓
	UT520	✓	✓	✓	✓	✓
	UT350	✓	✓	✓	✓	✓
	UT320	✓	✓	✓	✓	✓
Yokogawa Electric	UT2400/2800	✓	✓	✓	✓	✓
	UT450	✓	✓	✓	✓	✓
	UT32A/35A (MODBUS RTU)	✓	✓	✓	✓	✓
	UT52A/55A (MODBUS RTU)	✓	✓	✓	✓	✓
	UT75A (MODBUS RTU)	✓	✓	✓	✓	✓
	μR10000/20000 (Ethernet TCP/IP)	✓	✓	✓	✓	✓
	MODBUS RTU	✓	✓	✓	✓	✓
None	MODBUS TCP/IP (Ethernet)	✓	✓	✓	✓	✓

알에스오토메이션주식회사

경기도 평택시 진위면 진위산단로 38 #17709
T. 031.685.9300 F. 031.685.9500 A/S. 1588.5298 W. www.rsautomation.co.kr

RS Automation Co., Ltd.

38, Jinwisandan-ro, Jinwi-myeon, Pyeongtaek-si, Gyeonggi-do, Korea, Zip code : 17709
T. +82.31.685.9300 F. +82.31.685.9500 A/S. 1588.5298 W. www.rsautomation.biz

RS Automation USA LLC.

900 Wigwam Parkway Suite 100, Henderson NV 89014 USA
W. www.rsautomation.biz / www.rsautomationusa.com

宁波信智自动化有限公司

浙江省宁波市镇海区蛟川街道北欧工业园金溪路3号A10栋2楼
总机. +86.574.2650.9821 传真. +86.574.8650.9637 网址. www.rsautomation.cn