

Hybrid Multi Insertion Machine

i-Series

FIRST MOVER of
Smart Factory Automation Machine



POWER AUTOMATION

i-Series

As an equipment based on SMT technology, it is a state of the art Hybrid Multi Insertion Machine that can quickly and accurately place various parts.

i-6.0

Single Gantry

1 Gantry X 6 Head

Front : 6 Head

i-12.0

Dual Gantry

2 Gantry X 6 Head

Front : 6 Head

Rear : 6 Head

* Equipment is classified by 2 types
(Standard : Gantry quantity of equipment)



Specifications

Item	i-6.0	i-12.0
Machine Size	L1,730 x D2,160 x H1,700 [mm]	L1,730 x D2,160 x H1,700 [mm]
Number of spindles	1 Gantry X 6 Head	2 Gantry X 6 Head
Max Speed	0.8 ~ 3 sec / point	0.4 ~ 3 sec / point
Accuracy	±0.050 [mm]	±0.050 [mm]
Power supply	AC 200 ~ 430V, 50/60Hz, 3phase	AC 200 ~ 430V, 50/60Hz, 3phase
Part Height (Max)	~ 60 [mm]	~ 60 [mm]
PCB Size (Max)	520.0 * 350.0 [mm] (Special Width: 490.0 [mm])	520.0 * 350.0 [mm] (Special Width: 490.0 [mm])
PCB Size (Min)	70 * 50.0 [mm]	70 * 50.0 [mm]
PCB Thickness (Max)	5.0 [mm]	5.0 [mm]
PCB Thickness (Min)	1.0 [mm]	1.0 [mm]

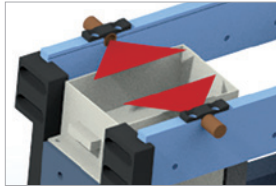
Reliable Inspection

1/ LV [Laser Vision] (Option)

Location revision with lead detection

Determination of whether it is bent, cut/left out

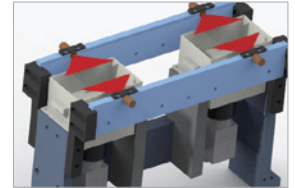
Test time : 25ms (based on 2pin)



2/ 2D Vision Camera

Recognize the shape of the parts

Recognize lead end compensation

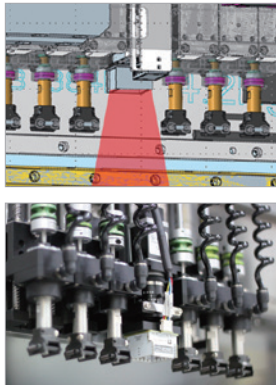


3/ Head Camera

Recognize the fiducial mark

Teaching pick up and placing location

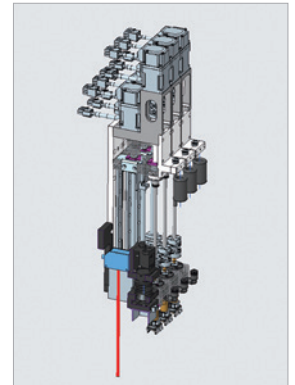
Recognize barcode



4/ HM [Height Measurement] (Option)

After mounting the material, measures the height of the top surface to prevent placing error (Detects lifting errors)

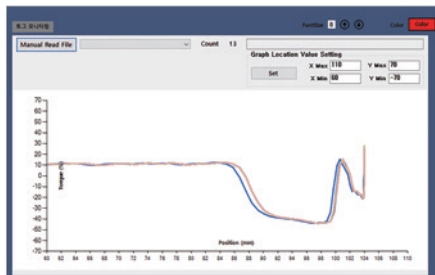
By compensating the bending of PCB, reflect the material placing height



Customizing

[Software]

Can develop according to customers' needs with independent software development.



Talk monitoring



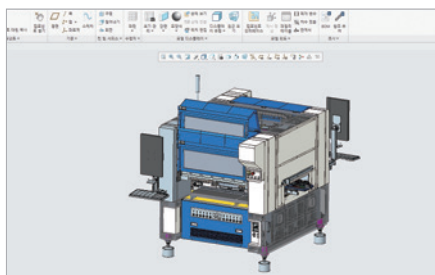
Real-time monitoring



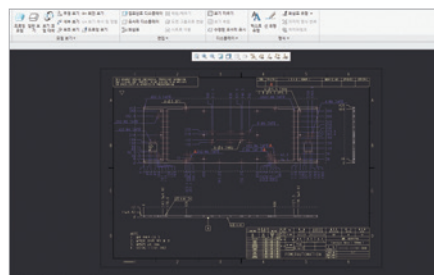
User interface

[Hardware]

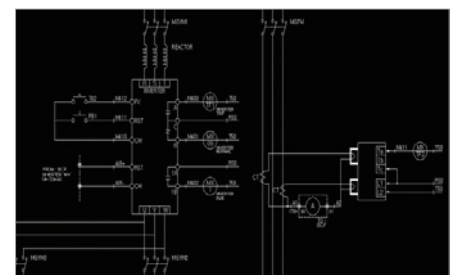
Can adjust/control size with 3D design : adjustable power and motion control technology.



Equipment development



Surrounding device development



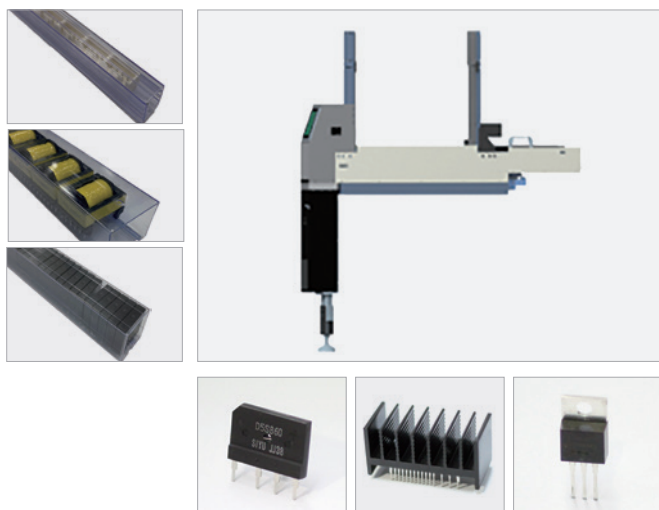
Control development

Feeder

Configure multiple types of part supply devices according to the supply method of parts.

Stick Feeder

[Type : Pusher, Air]



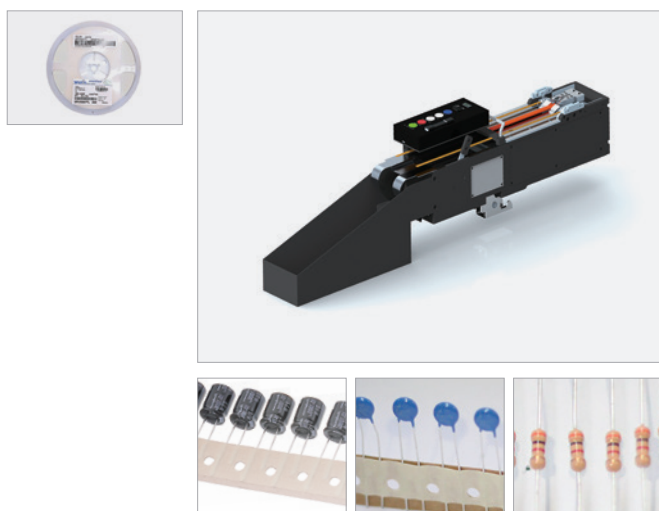
Tray Feeder

[Type : Twin Tray Feeder]

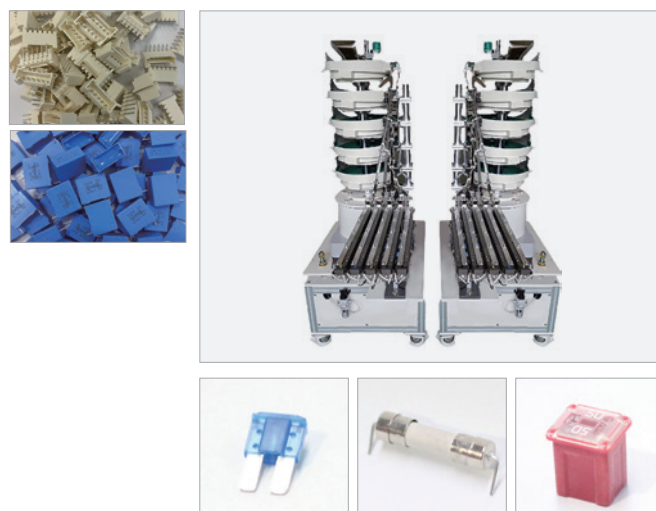


Reel Feeder

[Type : Tape, Radial, Axial]



Bowl Feeder



Feeder Quantity

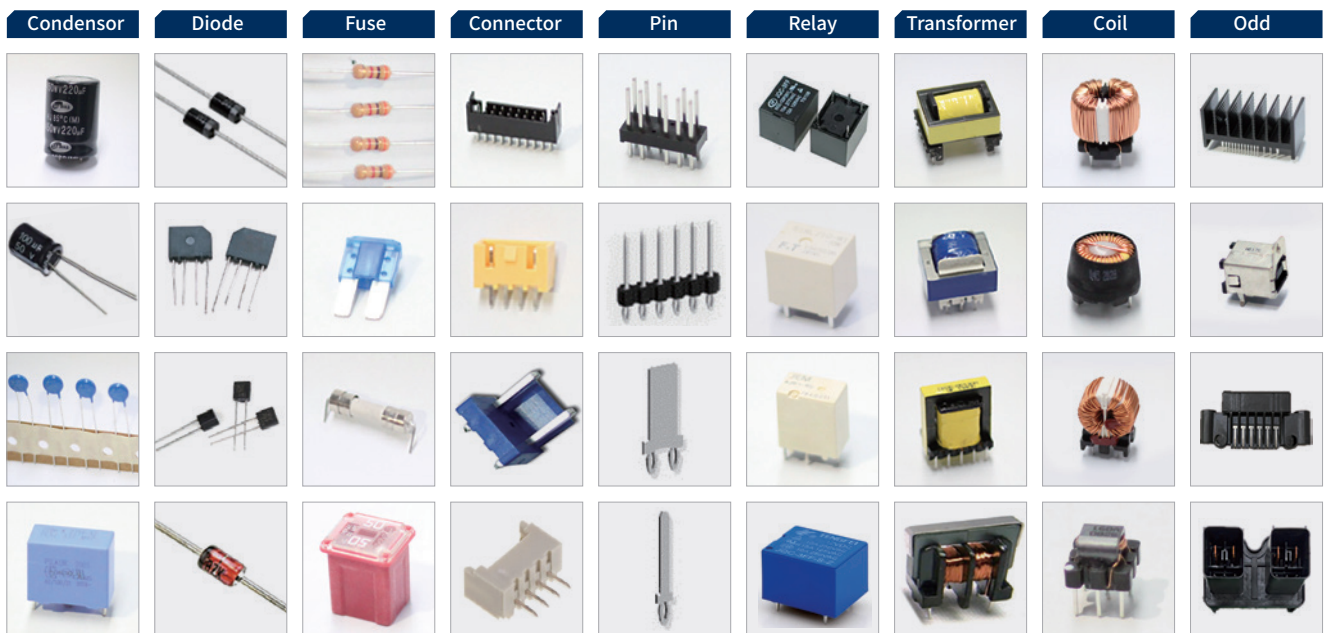
Sort	Stick Feeder		Tray Feeder	Reel Feeder		Bowl Feeder				
	Standard	Silm	TTF	Reel_SMD (8mm / 12mm)	Radial / Axial	1 Bowl	2 Bowl	3 Bowl	4 Bowl	5 Bowl
Front	8	9	-	4	8	2 (Special Option : 3)				
Rear	8	9	1	4	8	2 (Special Option : 3)				

Nozzle

According to the characteristics of the part, Suction Nozzle or Gripper Nozzle is produced and supplied.



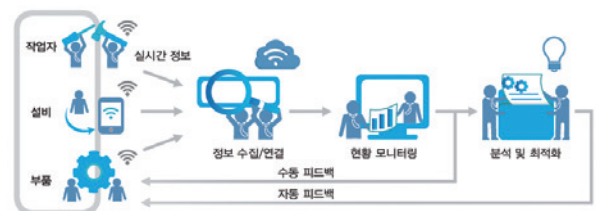
Possible Material



Systematic Management

MES [Manufacturing Execution System] (Option)

MES provides information that can be optimized for production activities from ordering to shipment of finished products.



Barcode recognition function (Option)

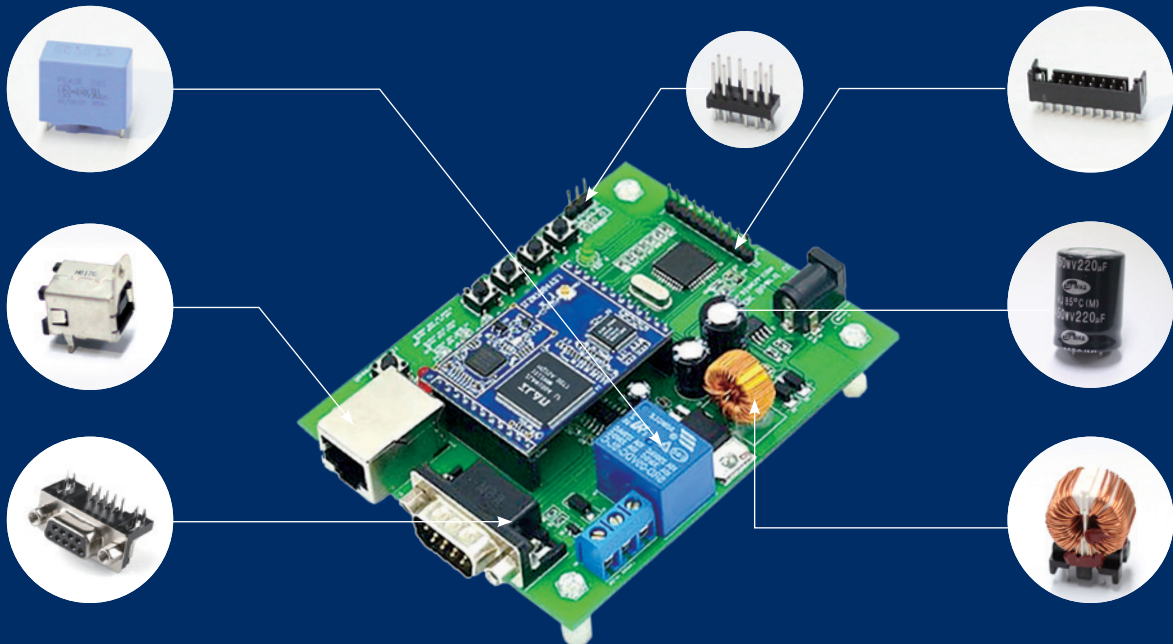
Erroneous input test by recognizing the PCB Barcode Head Camera / In, Out Conveyor / Handy Barcod



Mission
Smart Factory
Automation Process
Optimization

Vision
Smart Factory
Solutions Provider

Value
Win-win growth
by creating value
for customers



FIRST MOVER of
Smart Factory
Automation
Machine

(31094) 10, 1-ro, Baekseok Industrial Complex, Seobuk-gu, Cheonan-si, Chungcheongnam-do
 HQ : M-dong room no. 209
 Office : M-dong room no. 404
 www.powerautomation.co.kr

[Inquiry]
 Korea 010-9052-0346 / 010-7186-5549
 Overseas 010-4335-9321 / 010-2291-7275

The resources and product specifications included in this catalogue can be changed unannounced, and the resource, specifications and numbers included in this catalogue is the Measured value to be specified by our company. Difference in the above details may occur according to the actual usage conditions, and please consult with the sales workers about matters related to detailed options.