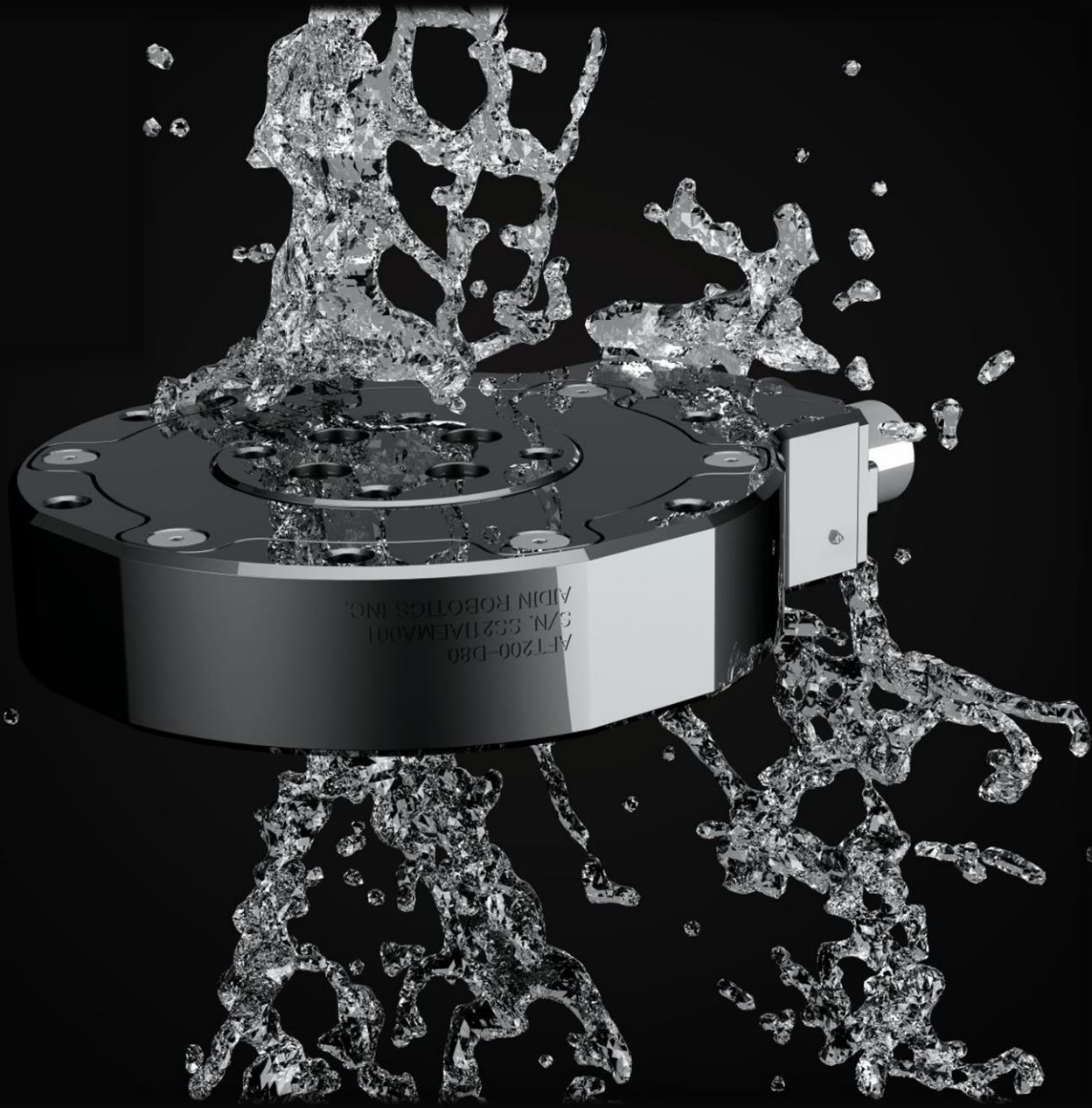


AFT SERIES

Smart 6-Axis Force / Torque Sensor



AFT200-D80-

Features

- Smart 6-axis force/torque sensor
- All-in-one sensor (No additional amplifier)
- Digital output communications (C-CAN, E-EtherCAT)
- Inertial measurement unit (IMU) integrated
- Collaborative robot, industry application, automation

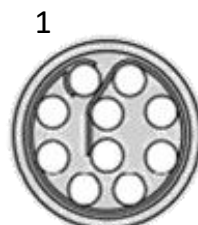


Specification table

Index	Unit	Value
Operating voltage	VDC	5 (CAN)
Max. safe excitation voltage	VDC	24 (EtherCAT)
Nominal force range (F_{XYN})	N	200
Nominal force range (F_{ZN})	N	200
Nominal torque range (M_{XYZN})	Nm	15
Limit force (F_{XYL})	N	300
Limit force (F_{ZL})	N	500
Limit torque (M_{XYZL})	Nm	30
Resolution*	N	0.015
Signal noise**	N	0.1
Maximum Sample rate	Hz	1,000
Dimensions	mm	D80 x H20.5
Operating temperature		10-50 °C
Interfaces		CAN, EtherCAT
Connector		For User: CAN_H / CAN_L / VCC / GND ODU G40B0C-P10LCC9-0000

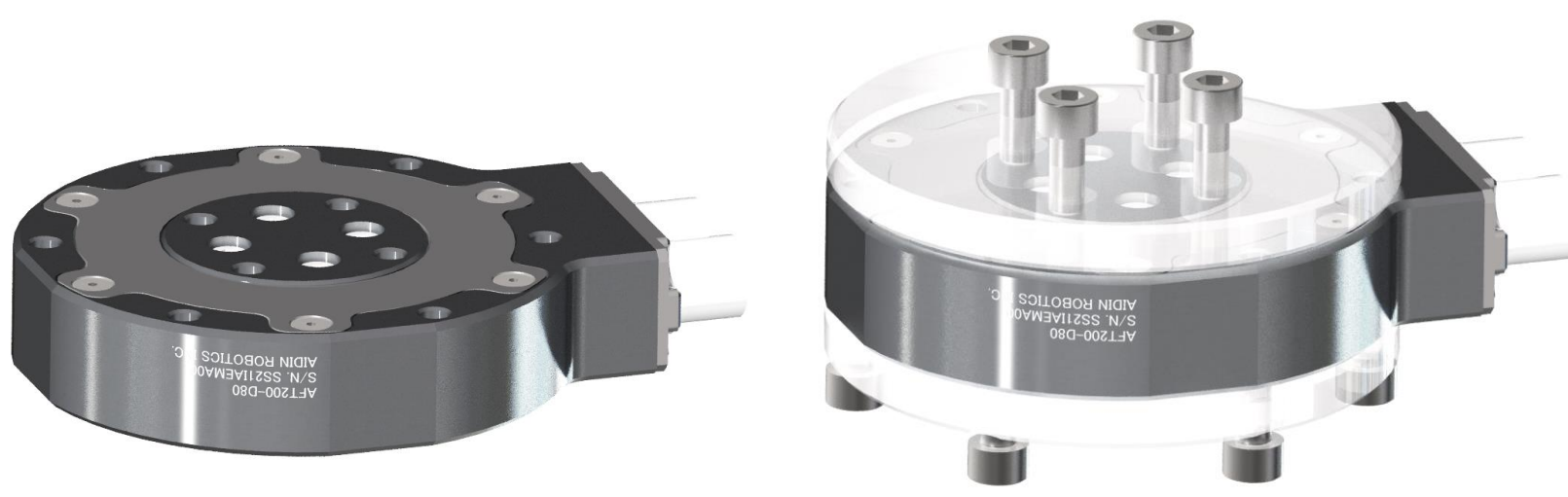
* Signal noise is defined as the standard deviation of typical on second no-load signal

Pin out (CAN)



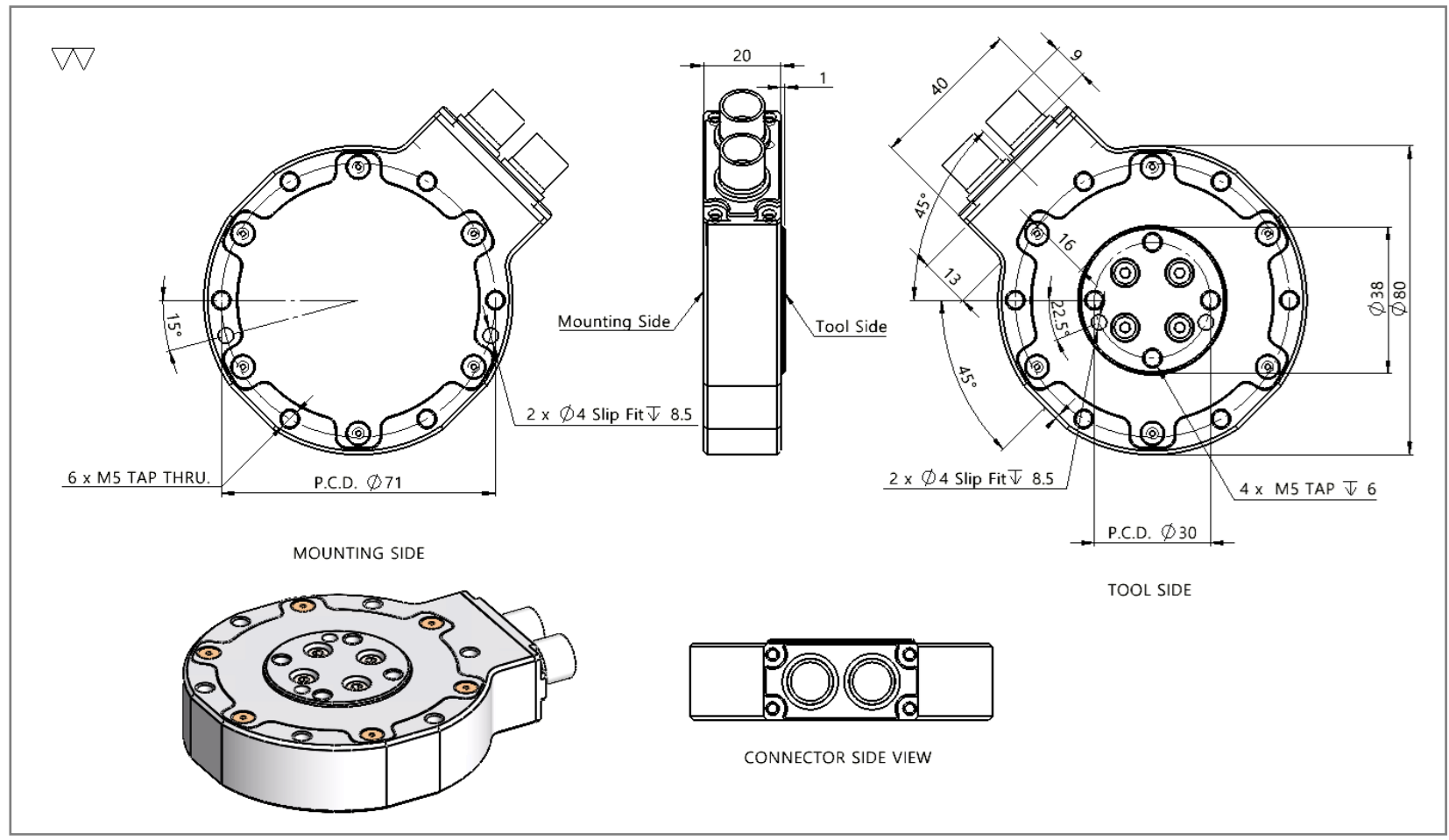
- 1 – NC
- 2 – 5V
- 3 – GND
- 4 – NC
- 5 – CAN_HIGH
- 6 – CAN_LOW
- 7 – NC
- 8 – NC
- 9 – NC
- 10 – NC

Bolting example



*Transparent parts are user part examples

Drawing



AIDIN ROBOTICS
 (주) 에이딘로보틱스

경기도 수원시 장안구 서부로 2066, 산학협력센터 85311호
 Tel : 031-290-7926 E-mail : info@aidinrobotics.com