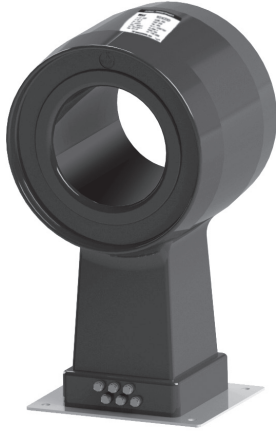


POST BUSBAR TYPE (부스바 관통형) CURRENT TRANSFORMER

17.5~24kV (1000~4000A / 100In)

W24CPA



EPOXY RESIN CASTING CURRENT TRANSFORMERS for highest voltage of equipment up to 24kV

W24CPA 변류기는 최고 회로전압 24kV급 절연성능으로 설계되어진 옥내용 에폭시몰드 제품으로 그 이하 전압(17.5kV) 제품에 대해서는 동일한 치수(DIMENSION)를 가진다. 본 제품은 설치공간이 협소한 고압배전반에 매우 적합한 제품이다. 또한 1core 및 2 core의 단일 비 또는 다중 비 형태의 제품으로 설계 및 제작이 가능합니다.

The W24CPA current transformer is an indoor epoxy resin cast product designed in a maximum circuit voltage 24kV-class insulation performance, and the less voltage(17.5kV) product has the same dimensions. This product is very suitable for standard switchboards installed in a narrow space. In addition, this can be designed and fabricated in a single or multiple ratio type such as 1 core and 2 cores.

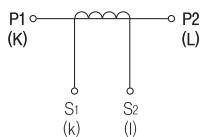
● Feature

규격 Standard	IEC - IEEE - KS
설계 및 적용 Design and Application	계기 및 보호용 Designed for measuring and/or protection
사용조건 Service condition	옥내 Valid for indoor service
작업공정 Working process	자동진공주형방식 Automatic vacuum casting method

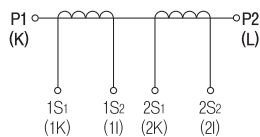
● Electrical characteristic

ITEM	MODEL	
	W24CPA	
Highest voltage for equipment (Um)	17.5kV	24kV
Rated power-frequency withstand voltage (60sec)	38kV	50kV
Rated lightning impulse withstand voltage (1.2/50μs)full wave	95kV	125kV
Rated frequency	50 / 60Hz	
Rated primary current(Ipr)	1000 to 4000A	
Rated secondary current(Isr)	5 or 1A	
Rated continuous thermal current	120%	
Rated short-time thermal current Ith (1sec)	100In	
Rated dynamic current Idyn (2.5×Ith)	100kA	
Insulation class (according to 60085)	E	
Standard	According to customer requirements	
Weight (approx.)	27kg	

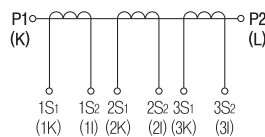
● Connection Diagram



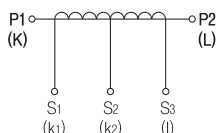
1 - Core Single ratio



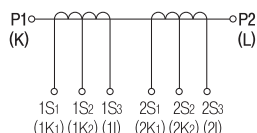
2 - Core Single ratio



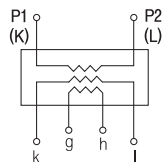
3 - Core Single ratio



1 - Core Double ratio



2 - Core Double ratio



1 - Core 3rd winding

POST BUSBAR TYPE (부스바 관통형) CURRENT TRANSFORMER



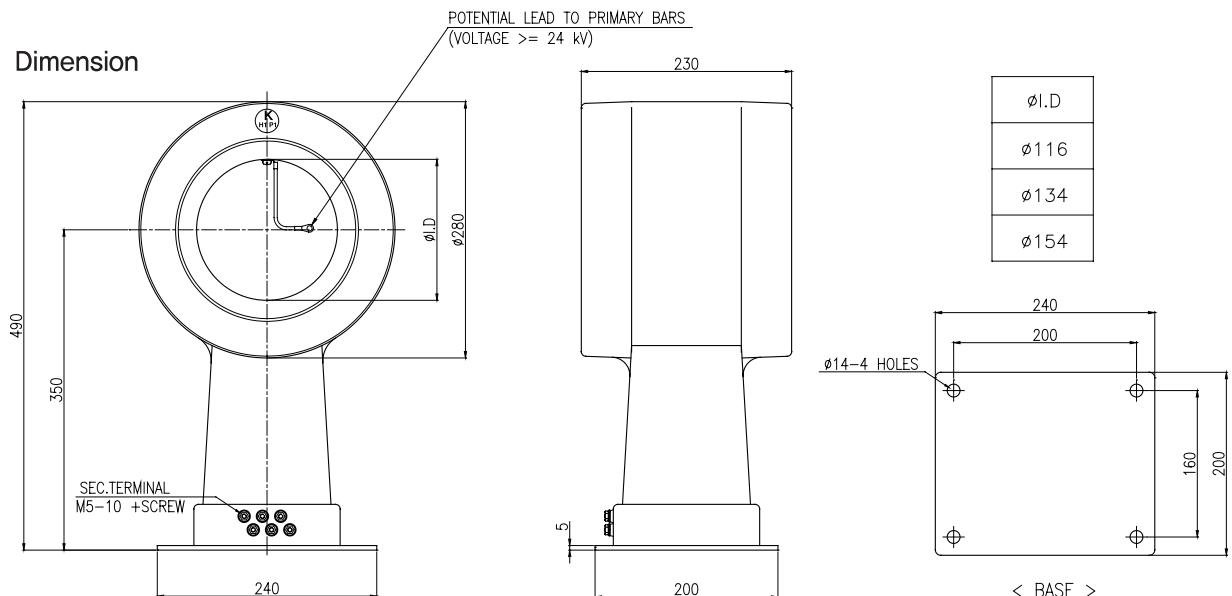
고압계기용변성기

17.5~24kV (1000~4000A / 100In)

● Specification

ITEM	Rated short time current	Current Ratio	Service	IEC 61869-2			IEEE C57.13			KSC 1706		
				Burden	Accuracy Class	Over Current Factor	Burden	Accuracy Class	Over Current Factor	Burden	Accuracy Class	Over Current Factor
24C-PA 1-Core Single Ratio CT	100In	1000/5A~1500/5A	Metering	15VA 30VA	1.0 1.0	FS10 FS10	12.5VA (B-0.5)	0.6,1.2	-	15VA 25VA 40VA	0.5,1.0 0.5,1.0 1.0	-
		1600/5A~2500/5A					22.5VA (B-0.9)					
		3000/5A~4000/5A	Protection	15VA 30VA	5P,10P 5P,10P	30 20	25VA (B-1) 50VA (B-2)	C-100 C-200	-	15VA 25VA 40VA	1P 1P 1P	n>30 n>20 n>20
24C-PA 1-Core Double Ratio CT	100In	1500~750/5A	Metering	15VA 30VA	0.5,1.0 0.5,1.0	FS10 FS10	12.5VA (B-0.5)	0.6,1.2	-	15VA 25VA 40VA	0.5,1.0 1.0 1.0	-
		1600~800/5A~2500~1250/5A					22.5VA (B-0.9)					
		3000~1500/5A~ 4000~2000/5A	Protection	15VA 30VA	5P,10P 5P,10P	30 20	25VA (B-1) 50VA (B-2)	C-100 C-200	-	15VA 25VA 40VA	1P 1P 1P	n>30 n>20 n>20
24C-PA 2-Core Single Ratio CT	100In	1000/5-5A~ 2000/5-5A	Metering (1st core)	15VA 30VA	0.5,1.0 0.5,1.0	FS10 FS10	12.5VA (B-0.5)	1.2	-	15VA 25VA 40VA	1.0 1.0 1.0	-
		2500/5-5A~ 4000/5-5A	Protection (2nd core)				15VA 30VA					
24C-PA 3-Core Single Ratio CT	100In	1500/5-5-5A~2000/5-5-5A	Metering (1st core)	15VA 30VA	0.5,1.0 0.5,1.0	FS10 FS10	12.5VA (B-0.5)	1.2	-	15VA 25VA 40VA	1.0 1.0 1.0	-
			Protection (2nd core)				15VA 30VA					
		2500/5-5-5A~4000/5-5-5A	Protection (3rd core)	15VA 30VA	5P,10P 5P,10P	20 10	12.5VA (B-0.5) 25VA (B-1)	C-50 C-100	-	15VA 25VA 40VA	1P 1P 1P	n>20 n>10 n>10
24C-PA 3rd Winding CT	100In	1000/5A 100/5A~4000/5A 100/5A	Protection (3rd Winding)	-	-	-	-	-	-	15/15VA 40/15VA	1P/5G	n>30 n>20

● Dimension



HV / C T
고압변류기

HV / VT - MOF
고압변압기

LV / C T
저압변류기

LV / VT
저압변압기

RELA Y
보호계전기

E L D
누전경보기

G F R
지락계전기

Z C T
영상변류기

M E T E R
지시전계기

S H U N T
선틀