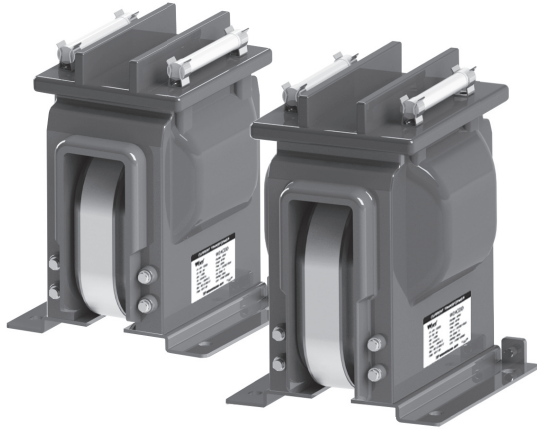


3.6~7.2kV (0~100VA)

W07V2A / W07V2B



EPOXY RESIN CASTING VOLTAGE TRANSFORMERS for highest voltage of equipment up to 7.2kV

W07V2A, W07V2B 변압기는 최고회로전압 7.2kV급 절연성능으로 설계되어진 옥내용 에폭시몰드 제품으로 그 이하 전압(3.6kV) 제품에 대해서는 동일한 치수(DIMENSION)를 가진다. 안정적인 절연능력 및 전기적 특성을 갖으며, 기계적 안전성과 유지보수의 용이성이 우수한 제품이다. 또한 단일 또는 다중 탭을 갖는 제품으로 설계 가능합니다.

The W07V2A, W07V2B voltage transformer is an indoor epoxy resin cast product designed in a maximum circuit voltage 7.2kV-class insulation performance, and has the same dimensions for the less voltage(3.6kV) product. This has a stable insulation capacity and electrical property, has excellent mechanical safety, and is easy to maintain. In addition, this can be designed in products with single of multiple taps.

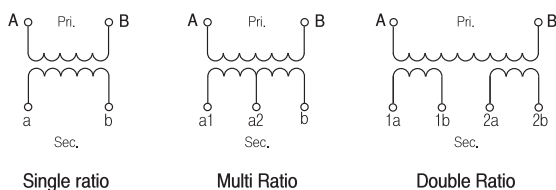
● Feature

규격 Standard	IEC - IEEE - KS etc.
설계 및 적용 Design and Application	계기 및 보호용 Designed for measuring and/or protection
사용조건 Service condition	옥내 Valid for indoor service
작업공정 Working process	- 자동진공주형방식 Automatic vacuum casting method - APG방식 Automatic Pressure Gelation method

● Electrical characteristic

ITEM	MODEL	
	W07V2A / W07V2B	
Highest voltage for equipment (Um)	3.6kV	7.2kV
Rated power-frequency withstand voltage (60sec)	10kV	20kV
Rated lighting Impulse withstand voltage (1.2/50 μ s)/full wave	40kV	60kV
Rated frequency	50Hz, 60Hz, others on request	
Rated Primary Voltage	3300V, 6600V	
Rated Secondary Voltage	110V, 120V, 220V	
Rated Voltage factor	1.2Con't	
Thermal Limit Burden	700VA	
Insulation class (according to IEC 60085)	E	
Standard	According to customer requirements	
Temperature Category	According to customer requirements	
Weight (approx.)	18kg	

● Connection Diagram



계기용변압기 / 비접지형 VOLTAGE TRANSFORMER (VT)



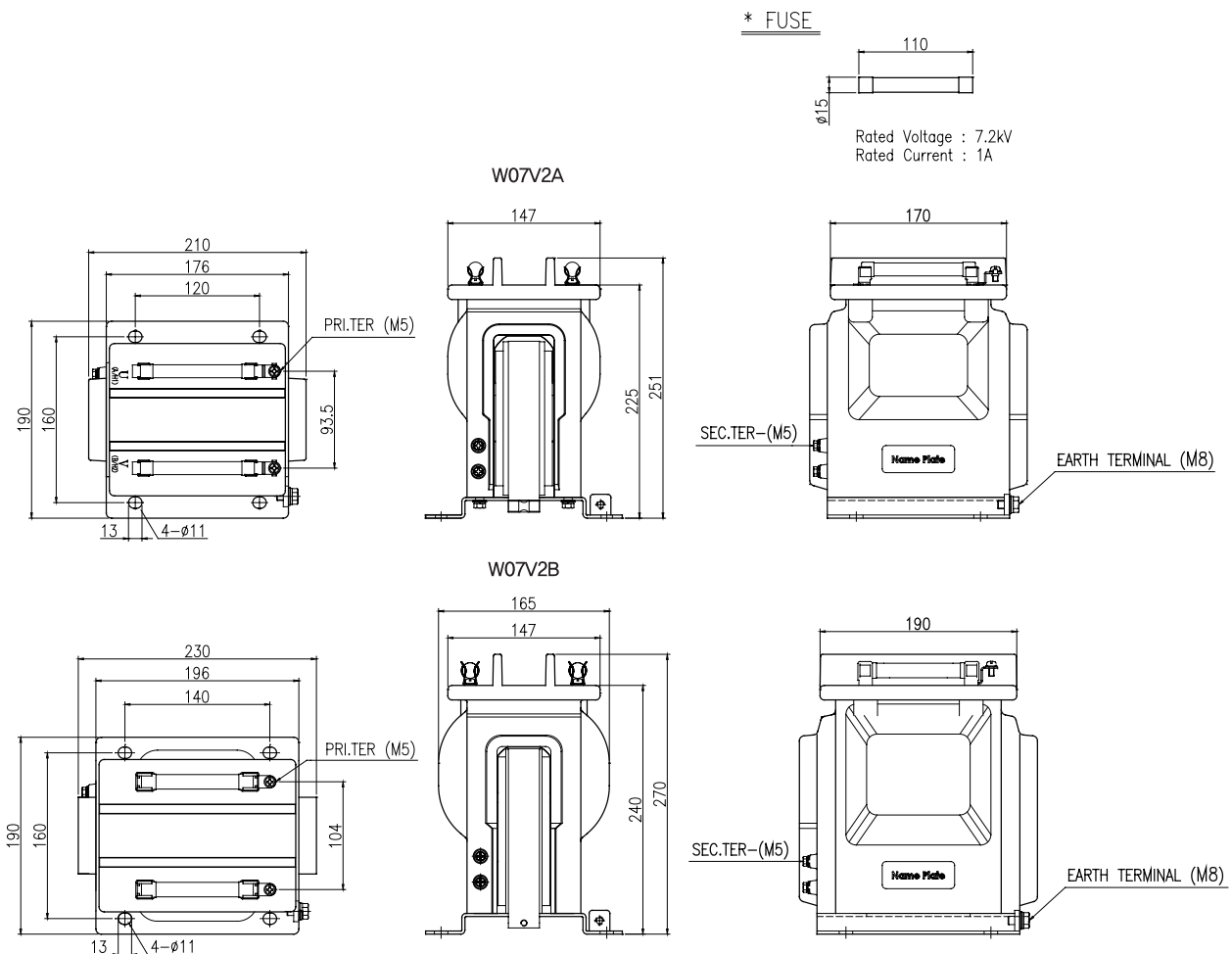
고압계기용변성기

3.6~7.2kV (0~100VA)

● Specification

ITEM	Highest voltage for equipment (Um)	Voltage Ratio (V)	IEC 61869-3			IEEE C57.13	
			Accuracy Class	Burden (VA)	Voltage Factor	Accuracy Class	Burden (VA)
W07V2A	3.6kV	3300/110	0.2	15	1.2Con't	0.3	M
			0.5	50			
			1.0	100			
W07V2A	7.2kV	6600/110	0.2	10	1.2Con't	0.3	M
			0.5	50			
			1.0	100			
W07V2B	3.6kV	3300/110	0.2	20	1.2Con't	0.3	M
			0.5	100			
			1.0	200			
W07V2B	7.2kV	6600/110	0.2	20	1.2Con't	0.3	M
			0.5	100			
			1.0	200			

● Dimension



고압 변류기
HV / CT

고압 변압기
HV / VT : MOF

저압 변류기
LV / CT

저압 변압기
LV / VT

보통 계전기
RELAY

누전경보기
E.L.D

지락 계전기
G.F.R

영상 변류기
Z.C.T

지시 전기 계기
METER

선트
SHUNT