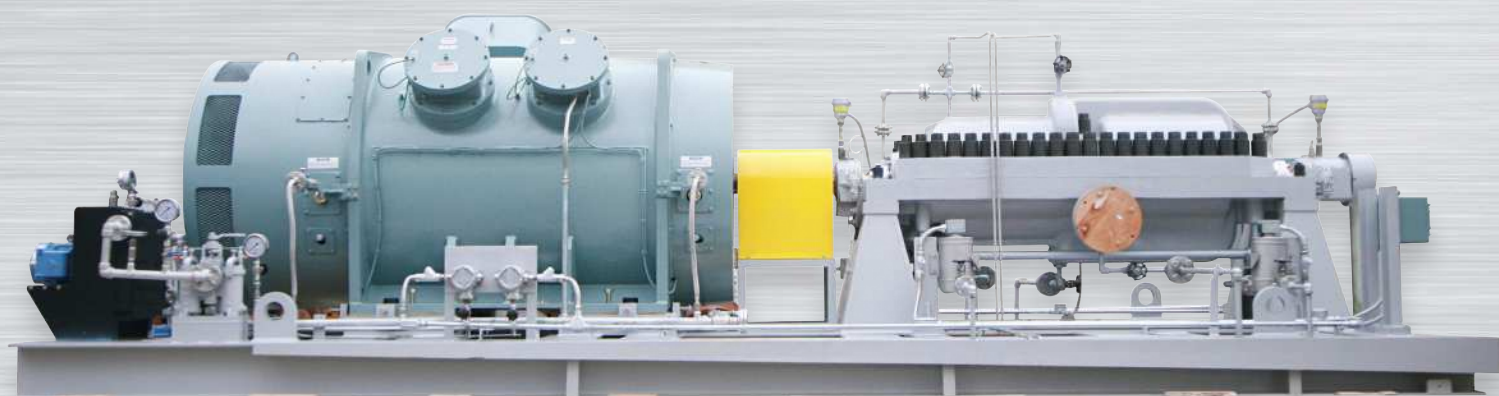


ASM

API 610 / ISO 13709 Type BB3

Axially Split Double Volute Type Multistage Pump



FEATURES AND BENEFITS

1 Casing

- Pump casing is of axially split and double volute design, and integral compact crossovers minimize flow losses and maximize efficiency.
- Suction and discharge nozzles are cast integrally with the lower half casing, which permits disassembly of the pump without disturbing the piping connections.
- Pump feet are located near the pump centerline to minimize alignment problems due to temperature changes.
- Auxiliary intermediate take-off connection to the casing is available where intermediate pressure is required.

2 Impellers

- Back-to-back mounted for axial thrust and precision cast impellers are of the enclosed type and individually balanced for smooth operation.
- Double suction first-stage impeller is available for lower NPSHR.
- Impellers are individually axially secured and are shrink fit to the shaft.

3 Seal chambers

- Both seal chambers are subject to suction pressure on standard designs.
- Pressure at the seal chamber opposite to the suction end is reduced to suction pressure by the throttle bushing and pipe.
- API 610 seal chambers accept various range of sealing options in accordance with API 682.

4 Casing and impeller wear rings

- Non-metallic wear rings are available.

5 Center bushing

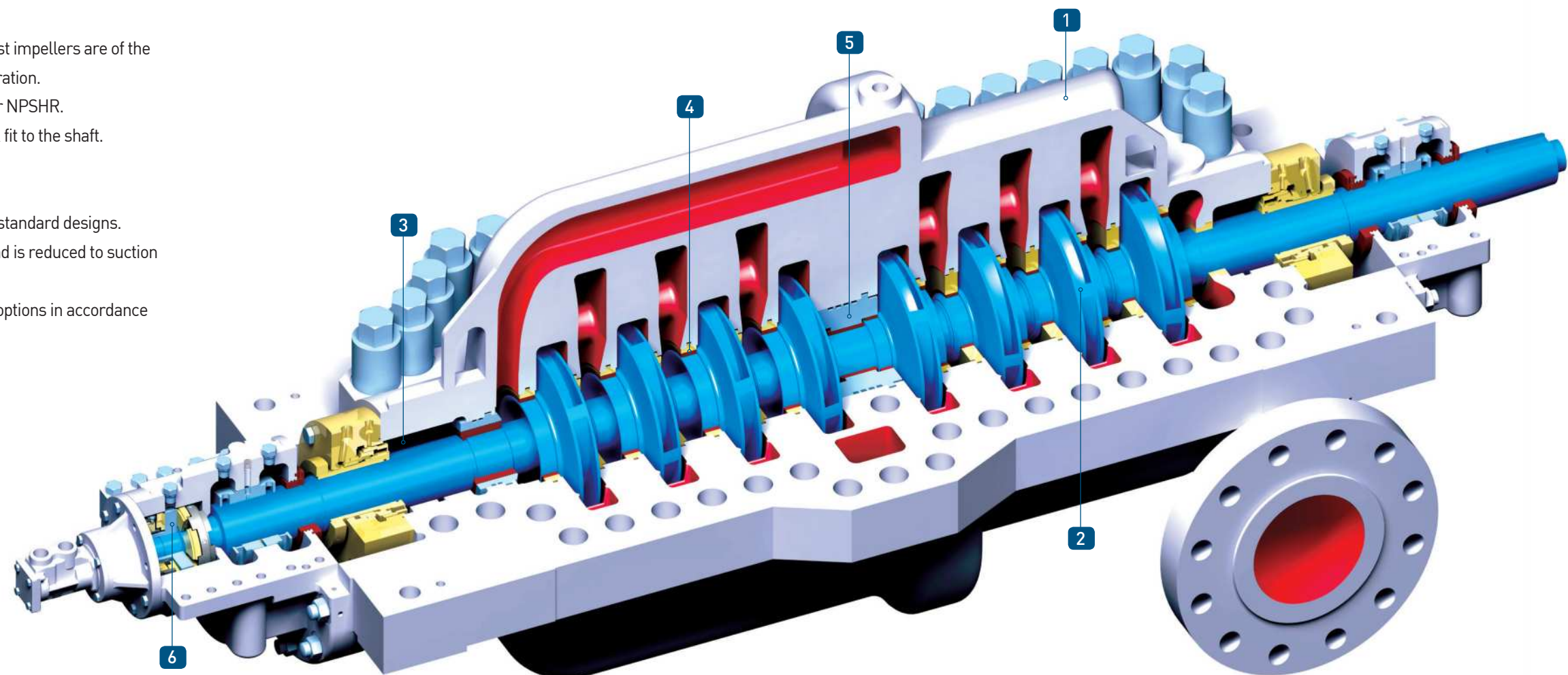
- Non-metallic material is available.

6 Bearings

- Ring oil lubricated radial ball and ball thrust bearings are standard.
- Oil lubricated with constant level oilers.
- Optionally, either ball bearing type or tilting pad type is installed as the thrust bearing in addition to the sleeve type Babbitt lined radial bearing.
- Pressure (Forced) lubrication is available.
- As for cooling, either air, water or product option is available.

DESIGN OPTIONS

HANDOL ASM pumps are also manufactured as non-API type.

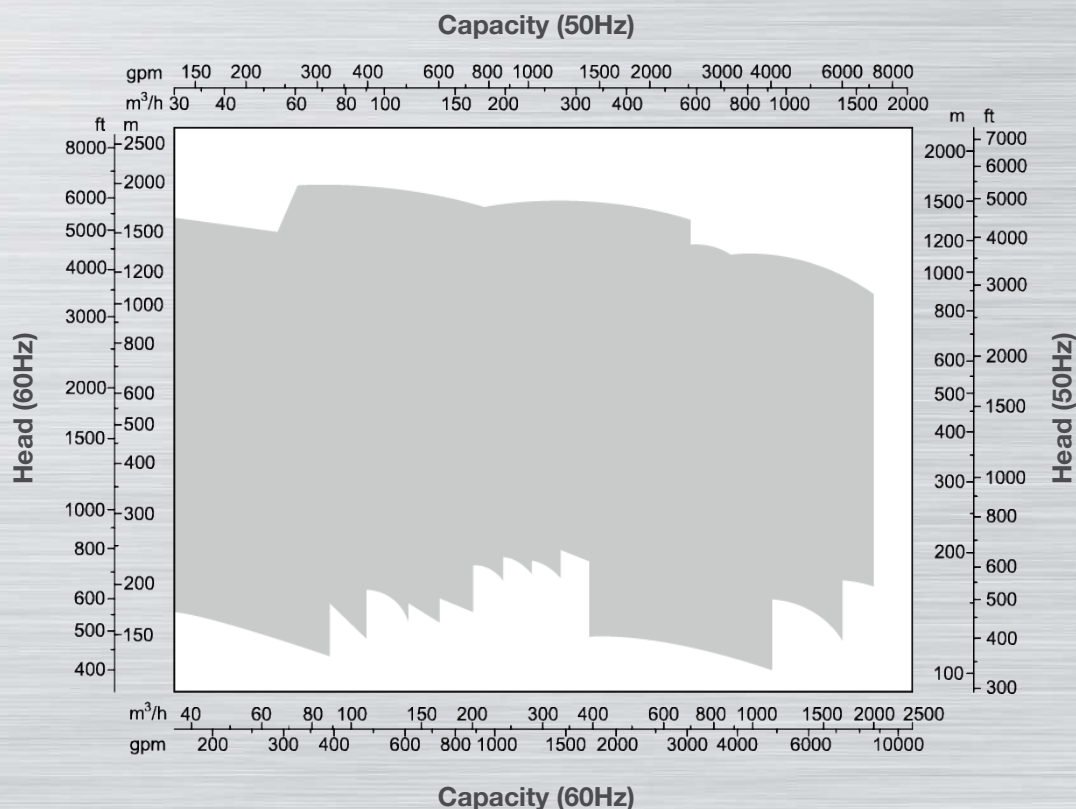


CONTACT

Headquarters | 296, Seunggicheon-ro, Namdong-gu, Incheon 21634, Republic of Korea | www.handolpumps.com
 Tel : +82 32 818 0105 | Fax : +82 32 818 0109 | E-mail : handol@handolpumps.com

HANDOL global network of manufacturing plants, sales offices, agents and service centers is close to its clients.

PERFORMANCE RANGES



OPERATING PARAMETERS

- Capacity ⇒ Up to 2000 m³/h
- Head ⇒ Up to 2000 m
- Pressure ⇒ Up to 200 bar
- Temperature ⇒ Up to 200 °C

APPLICATIONS

- Pipeline
- Boiler feed
- Water injection
- CO2 injection
- Process charge
- Descaling
- Mine dewatering
- Power recovery
- Reverse osmosis feed

MATERIALS

API Material class	S-6	C-6	A-8	D-1	D-2
--------------------	-----	-----	-----	-----	-----

Note : Other materials available on request