

CONTACT

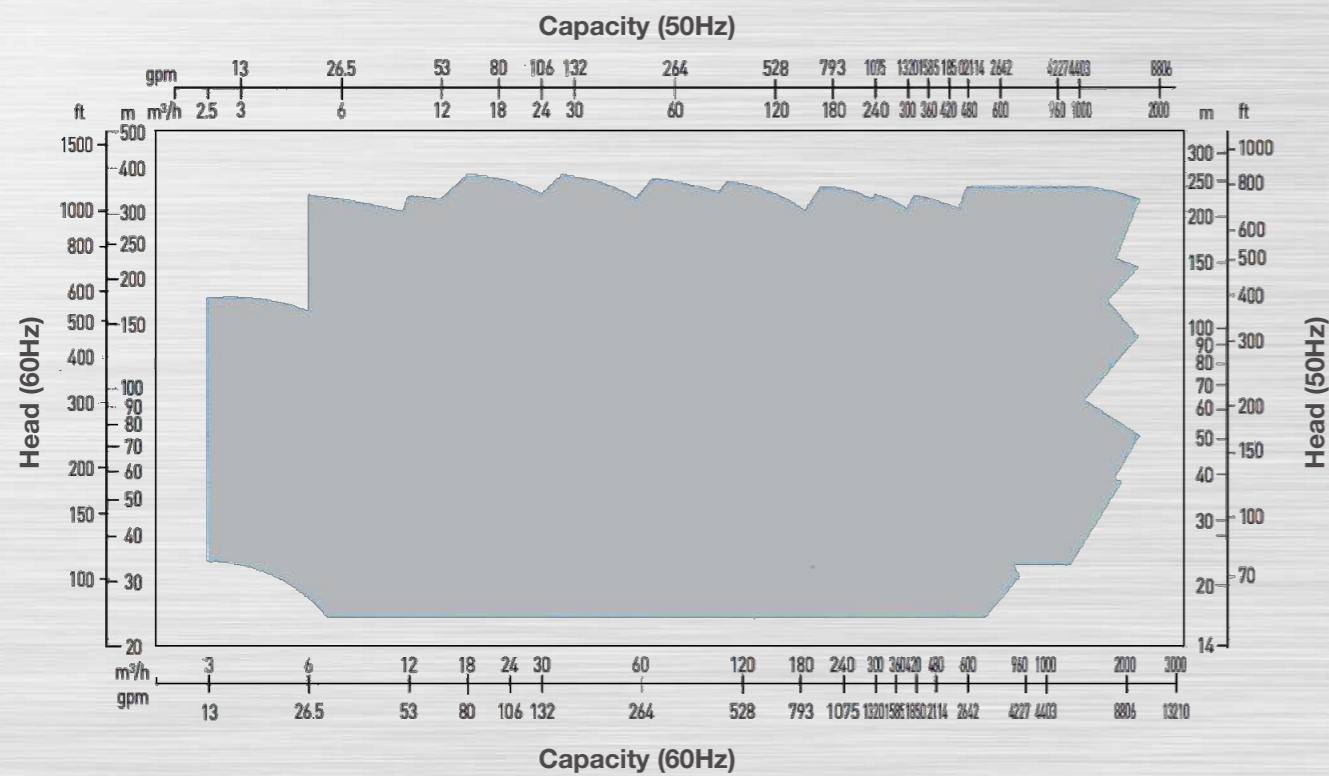
Headquarters | 296, Seunggicheon-ro, Namdong-gu, Incheon 21634, Republic of Korea | www.handolpumps.com
Tel : +82 32 818 0105 | Fax : +82 32 818 0109 | E-mail : handol@handolpumps.com

HANDOL global network of manufacturing plants, sales offices, agents and service centers is close to its clients.



VCH

PERFORMANCE RANGES



OPERATING PARAMETERS

- Capacity ⇒ Up to 1800 m³/h
- Head ⇒ Up to 350 m
- Pressure ⇒ Up to 40 bar
- Temperature ⇒ -100°C to 350°C

APPLICATIONS

- Condensate and condensate extraction
- Hydrocarbon
- Pipeline booster
- Crude oil loading
- Chemical and petrochemical transfer
- Brine injection
- Heater drain
- Cryogenic service

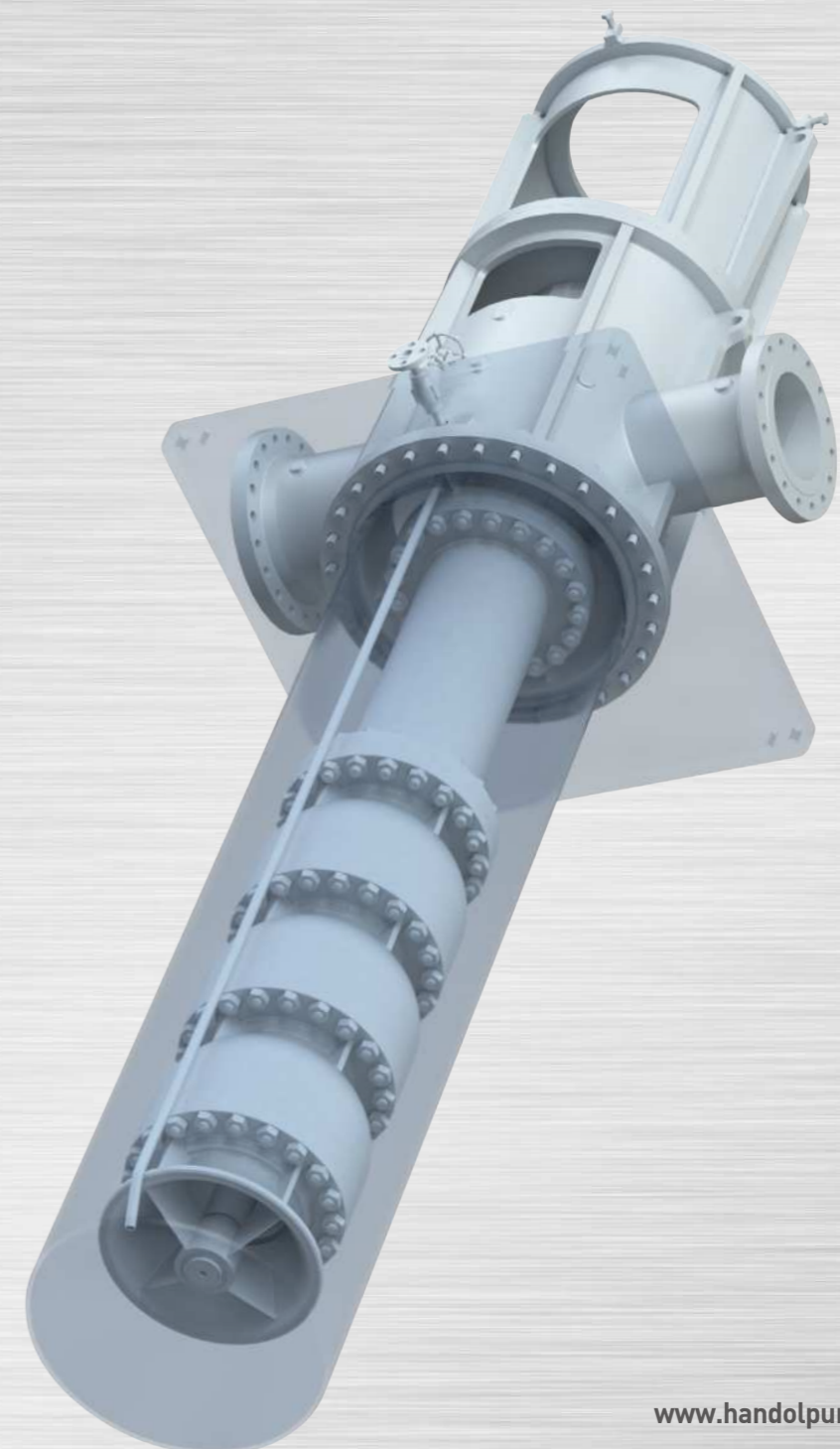
MATERIALS

API Material class	S-6	C-6	A-8	D-1	D-2
--------------------	-----	-----	-----	-----	-----

Note : Other materials available on request

CAT. NO. VCH2208

API 610 / Type VS6
Vertical Double-Casing(CAN) Pump



www.handolpumps.com

FEATURES AND BENEFITS

1 Bowl(s)

- Heavy wall and vane casting bowl designed to take efficiently pumping liquid to the stage or discharge column.
- Special single suction or double suction first-stage bowl is available for reduced NPSHR (Net Positive Suction Head Required).

2 Discharge Head

- Casted or fabricated discharge head, in addition to the connecting pump and piping system, is supporting and aligning driver to the pump.
- Upper ground or underground options are available.

3 Impeller(s)

- Special single suction or double suction first-stage impeller is available for lower Low Net Positive Suction Head Required (NPSHR).
- Low NPSHR allows use of a shorter pump.
- Closed type impeller(s) is precision casted and finished overall for the maximum hydraulic efficiency and dynamically balanced perfectly.

4 Shaft Seal

- Seal chambers designed in accordance with API610 accept various range of API682 sealing options.
- Shaft sealing by single or double mechanical seal with removable seal housing.

5 Column Bearings (Not show)

- Bearing materials for special applications, composition of which is determined according to the liquid handled.
- Intermediate bearings lubricated by pumping product or external flushing for bearing longer life.

6 Thrust Bearing Option

- Ball or roller bearing with oil bath lubrication system are standard to withstand hydraulic thrust addition to the rotor weight.
- Motor combined with thrust bearing incorporates rigid adjustable spacer type rigid coupling, which is optional and will withstands all pump thrusts.

7 Suction Bell

- Suction Bell is designed to provide smooth and efficient fluid flow into the eye of the first-stage impeller.

8 Can

- Low Suction Velocity Can Design results in optimum hydraulic inlet conditions at suction bowl inlet.
- The highly reliable welded barrel can easily meet local standards governing treatment of high pressure gasses.

